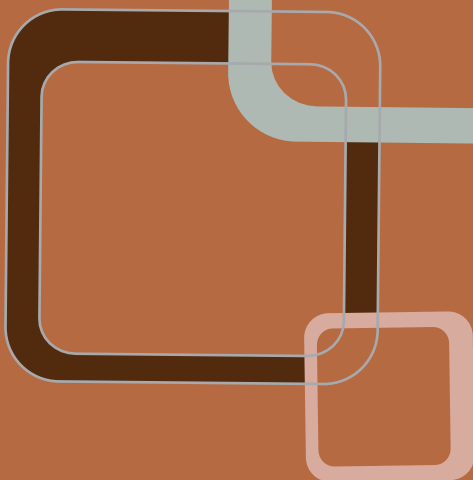
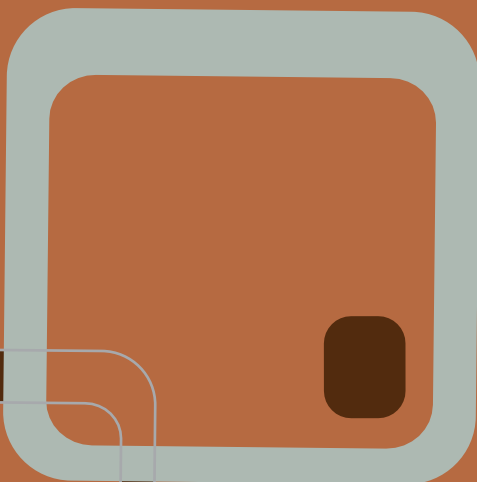
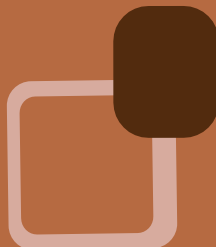
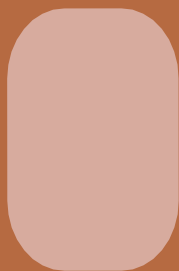
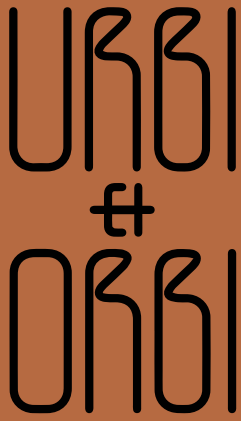


URBI
+
ORBI



FUNKY
COLLECTION



FUNKY COLLECTION

The Funky Collection features four light fixture designs along with TESSERA, probably the most iconic decorative wall-mounted element of the seventies. The concrete as the primary material exposes its plasticity and its diversity to these Organic and circular shapes.

With curved angles, a vibrant spectrum of colors, and a variety of finishes, each piece within this collection exudes a unique character. The term "funky" originally referred to anything earthy and in slang the unconventional living. Finally, in the seventies, it evolved to describe something cool, stylish, and unique. The funky attitude was all about confidence, self-expression, and living life to the fullest. It celebrated creativity individuality, diversity, and authenticity.

Influenced by this era, we created the funky collection.



ARETHA C CONCRETE PENDANT LAMP



ABOUT THE PRODUCT

Aretha C pendant lamp is designed by Urbi et Orbi Studio, part of the FUNKY collection.

Aretha is a feminine name of Greek origin. It derives from the word “arete,” meaning “virtue” or “excellence.” A name associated with the '70s era as a cultural icon whose influence surpassed music.

The Aretha C concrete suspension lamp was created in the workshop by combining 2 concentric circles. The random mechanical distortion formed this organic shape that reflects the diversity of the '70s.

It is a pendant lamp that adds unique value to the space on its own. The Aretha series is complemented by a wall lamp and a table lamp.

This concrete suspension lamp is produced through our company's Zero Waste Project developed over the past 3 years, with a recycling rate of 20%.



URBI ET ORBI BASED IN GREECE
(+30) 210 4520178

INFO@URBIETORBI.GR

THESSALONIKIS 61, 18233 ATHENS
WWW.URBIETORBI.GR

ARETHA C CONCRETE PENDANT LAMP

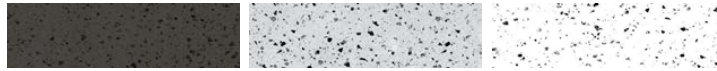
COLORS

SAND

ANTHRACITE

GREY

IVORY



OPTIONAL

HAK

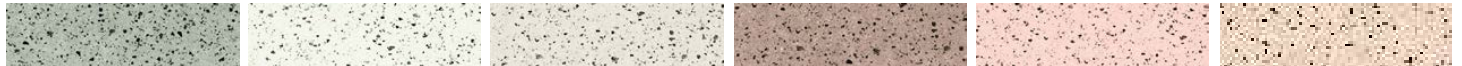
MIN

AMO

TAN

ROZ

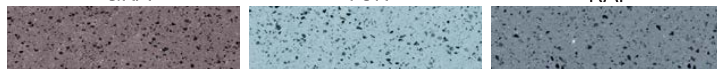
SOM



GRA

TUR

RAF



Colored in its mass with pigments

Every piece may exhibit color variations on its surface, as well as among other pieces of the same product or sample products.

The concrete surface exhibits surface voids that are caused by the air. This is a natural property of concrete.



SPECIFICATIONS

INDOOR

Length: 21 cm





Width: 6 cm

Height: 27 cm

Weight: 1.5 kg

Textile Cable: 1,9m max. (longer on demand)

Ceiling rose: Black Matte

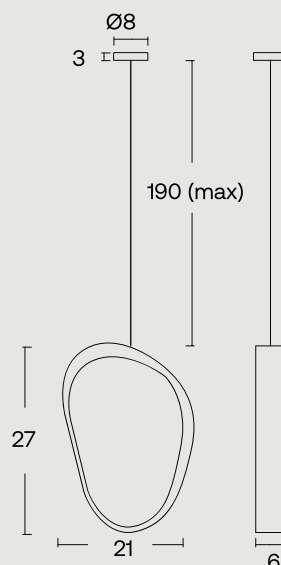
Cable Colors:    

Recommended light bulb

G9 Max 10 W LED

Light bulb not included

Input (V): 110-230



URBI ET ORBI BASED IN GREECE
(+30) 210 4520178

INFO@URBIETORBI.GR

THESSALONIKIS 61, 18233 ATHENS
WWW.URBIETORBI.GR

ARETHA T CONCRETE TABLE LAMP



ABOUT THE PRODUCT

Aretha T table lamp is designed by Urbi et Orbi Studio in 2016, part of the FUNKY collection.

Aretha is a feminine name of Greek origin. It derives from the word “arete,” meaning “virtue” or “excellence.” A name associated with the '70s era as a cultural icon whose influence surpassed music.

The Aretha T lamp was created in the workshop by combining 2 concentric circles. The random mechanical distortion formed this organic shape that reflects the diversity of the '70s.

It is a table lamp that adds unique value to a space on its own. The Aretha series is complemented by a wall lamp and a suspension lamp.

This concrete table lamp is produced through our company's Zero Waste Project developed over the past 3 years, with a recycling rate of 20%.



URBI ET ORBI BASED IN GREECE
(+30) 210 4520178

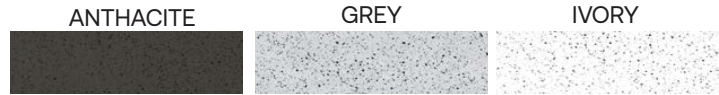
INFO@URBIETORBI.GR

THESSALONIKIS 61, 18233 ATHENS
WWW.URBIETORBI.GR

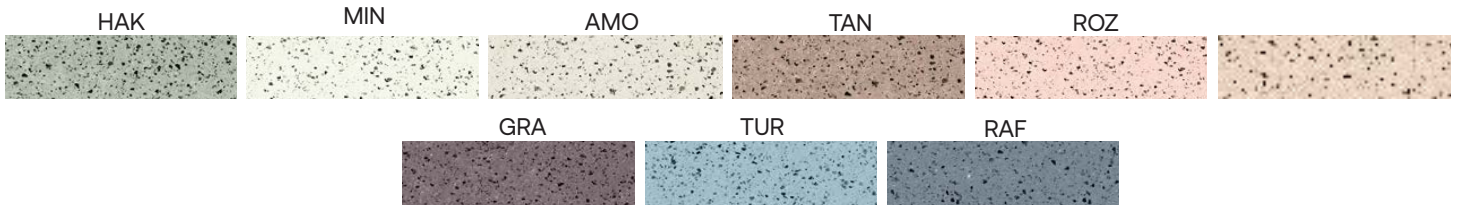
ARETHA T CONCRETE TABLE LAMP

COLORS

SAND



OPTIONAL

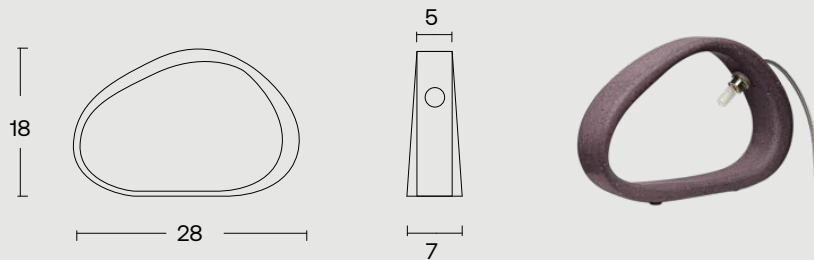


Colored in its mass with pigments



Every piece may exhibit color variations on its surface, as well as among other pieces of the same product or sample products.
The concrete surface exhibits surface voids that are caused by the air. This is a natural property of concrete.

SPECIFICATIONS



INDOOR

Size: 28 cm x 5-7 cm

Height: 18 cm

Weight: 1.3kg

Type of socket G9

Recommended light bulb: LED max 10W

Light bulb not included

Input (V):110-230 | Type C plug (EU)



URBI ET ORBI BASED IN GREECE
(+30) 210 4520178

INFO@URBIETORBI.GR

THESSALONIKIS 61, 18233 ATHENS
WWW.URBIETORBI.GR

ARETHA W CONCRETE WALL LIGHT



ABOUT THE PRODUCT

Aretha W wall lamp is designed by Urbi et Orbi Studio in 2016, part of the FUNKY collection.

Aretha is a feminine name of Greek origin. It derives from the word “arete,” meaning “virtue” or “excellence.” A name associated with the '70s era as a cultural icon whose influence surpassed music.

The Aretha lamp was created in the workshop by combining 2 concentric circles. The random mechanical distortion formed this organic shape that reflects the diversity of the '70s.

It is a wall lamp that adds unique value to a space on its own. The Aretha series is complemented by a table lamp and a suspension lamp.

This concrete wall light fixture is produced through our company's Zero Waste Project developed over the past 3 years, with a recycling rate of 20%.



URBI ET ORBI BASED IN GREECE
(+30) 210 4520178

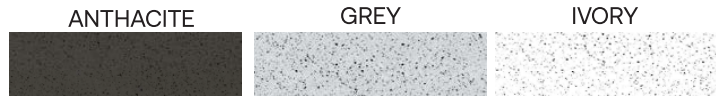
INFO@URBIETORBI.GR

THESSALONIKIS 61, 18233 ATHENS
WWW.URBIETORBI.GR

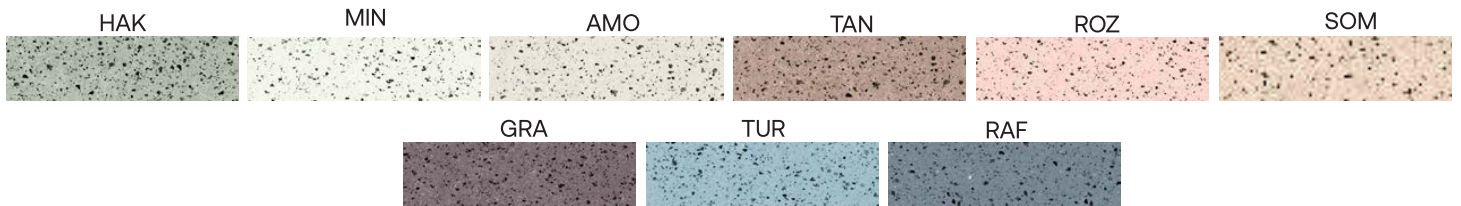
ARETHA W CONCRETE WALL LIGHT

COLORS

SAND



OPTIONAL

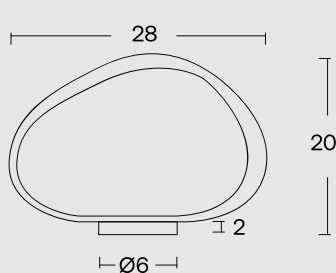


Colored in its mass with pigments



Every piece may exhibit color variations on its surface, as well as among other pieces of the same product or sample products.
The concrete surface exhibits surface voids that are caused by the air. This is a natural property of concrete.

SPECIFICATIONS



INDOOR

Size: 28 cm x 6 cm

Depth: 20 cm

Weight: 1.3kg

Type of socket G9

Recommended light bulb: LED max 10W

Light bulb not included

Input (V): 110-230



URBI ET ORBI BASED IN GREECE
(+30) 210 4520178

INFO@URBIETORBI.GR

THESSALONIKIS 61, 18233 ATHENS
WWW.URBIETORBI.GR

SUPERFLY C CONCRETE PENDANT LAMP



ABOUT THE PRODUCT

Superfly C pendant lamp is designed by Urbi et Orbi Studio in 2016, part of the FUNKY collection.

Inspired by the well-known soundtrack of the '70s, the term “superfly” itself refers to someone stylish, confident, and street-smart. In one word: COOL. And what could be cooler than some spheres floating above a coffee table, or a sphere above a nightstand? The series is complemented with a wall lamp and a table lamp.

This concrete suspension lamp is produced through our company’s Zero Waste Project developed over the past 3 years, with a recycling rate of 20%.



URBI ET ORBI BASED IN GREECE
(+30) 210 4520178

INFO@URBIETORBI.GR

THESSALONIKIS 61, 18233 ATHENS
WWW.URBIETORBI.GR

SUPERFLY C CONCRETE PENDANT LAMP

COLORS

SAND

ANTHRACITE



GREY

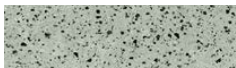


IVORY



OPTIONAL

HAK



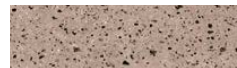
MIN



AMO



TAN



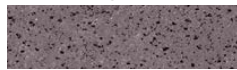
ROZ



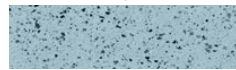
SOM



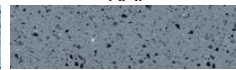
GRA



TUR



RAF



Colored in its mass with pigments

Every piece may exhibit color variations on its surface, as well as among other pieces of the same product or sample products.

The concrete surface exhibits surface voids that are caused by the air. This is a natural property of concrete.



SPECIFICATIONS

INDOOR

Diameter: 17 cm





Height: 14 cm

Edge thickness: 1 cm

Weight: 1,6 kg

Textile Cable: 1,9m max. (longer on demand)

Ceiling rose: Black Matte

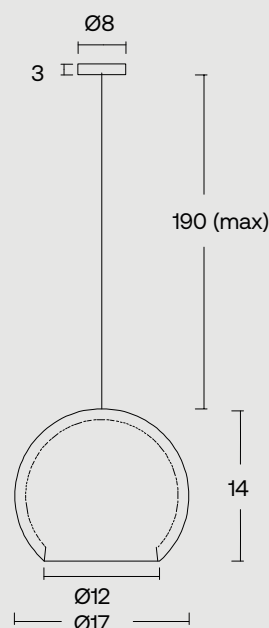
Cable Colors:    

Recommended light bulb

E14 LED max watt (W) 30

Light bulb not included

Input (V): 110-230



URBI ET ORBI BASED IN GREECE
(+30) 210 4520178

INFO@URBIETORBI.GR

THESSALONIKIS 61, 18233 ATHENS
WWW.URBIETORBI.GR

SUPERFLY T CONCRETE TABLE LAMP



ABOUT THE PRODUCT

Superfly T table lamp is designed by Urbi et Orbi Studio in 2016, part of the FUNKY collection.

Inspired by the well-known soundtrack of the '70s, the term “superfly” itself refers to someone stylish, confident, and street-smart. In one word: COOL. And what could be cooler than having a sphere illuminate your table? The series is complemented with a wall lamp and a suspension lamp.

This concrete table lamp is produced through our company’s Zero Waste Project developed over the past 3 years, with a recycling rate of 20%.

URBI ET ORBI BASED IN GREECE
(+30) 210 4520178

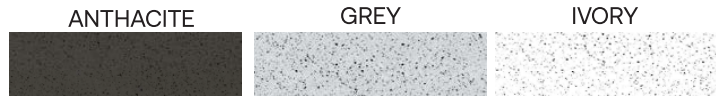

INFO@URBIETORBI.GR

THESSALONIKIS 61, 18233 ATHENS
WWW.URBIETORBI.GR

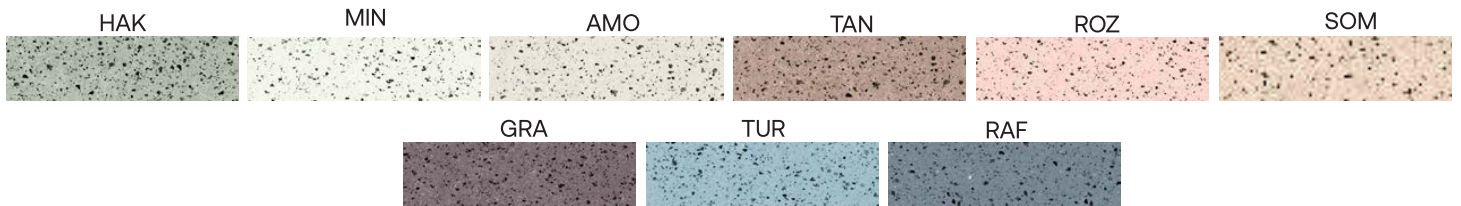
SUPERFLY T CONCRETE TABLE LAMP

COLORS

SAND



OPTIONAL

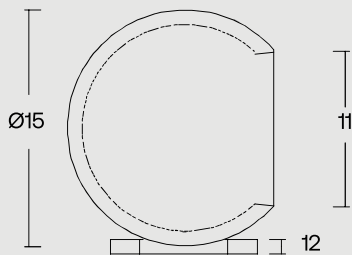


Colored in its mass with pigments



Every piece may exhibit color variations on its surface, as well as among other pieces of the same product or sample products.
The concrete surface exhibits surface voids that are caused by the air. This is a natural property of concrete.

SPECIFICATIONS



INDOOR

Diameter: 15 cm

Base: ring shape, made of concrete

The concrete sphere could be rotated and placed in any position.

Weight: 1,5 kg

Type of socket E14

Recommended light bulb: LED max 30W

Light bulb not included

Input (V):110-230

Type C plug (EU)



URBI ET ORBI BASED IN GREECE
(+30) 210 4520178

INFO@URBIETORBI.GR

THESSALONIKIS 61, 18233 ATHENS
WWW.URBIETORBI.GR

SUPERFLY W CONCRETE WALL LIGHT



ABOUT THE PRODUCT

Superfly W wall lamp is designed by Urbi et Orbi Studio in 2016, part of the FUNKY collection.

Inspired by the well-known soundtrack of the '70s, the term “superfly” itself refers to someone stylish, confident, and street-smart. In one word: COOL. And what could be cooler than having a sphere illuminate your space? The series is complemented with a table lamp and a suspension lamp.

This concrete wall light fixture is produced through our company's Zero Waste Project developed over the past 3 years, with a recycling rate of 20%.



URBI ET ORBI BASED IN GREECE
(+30) 210 4520178

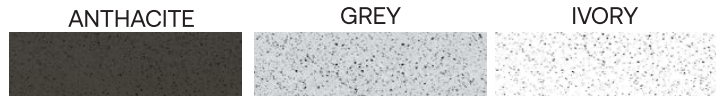
INFO@URBIETORBI.GR

THESSALONIKIS 61, 18233 ATHENS
WWW.URBIETORBI.GR

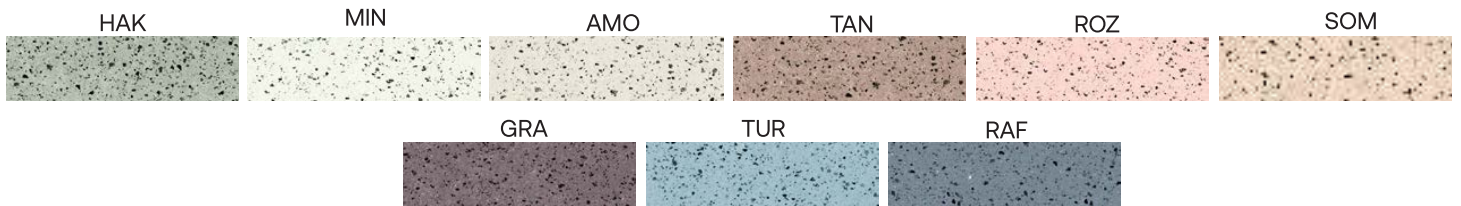
SUPERFLY W CONCRETE WALL LIGHT

COLORS

SAND



OPTIONAL

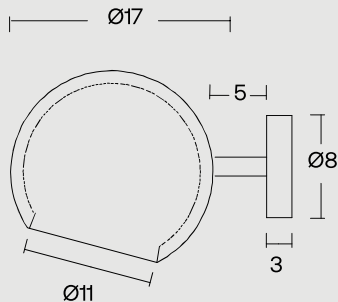


Colored in its mass with pigments



Every piece may exhibit color variations on its surface, as well as among other pieces of the same product or sample products.
The concrete surface exhibits surface voids that are caused by the air. This is a natural property of concrete.

SPECIFICATIONS



INDOOR

Diameter: 17 cm

Depth: 24 cm

Weight: 1.5 kg

Type of socket : E14

Recommended light bulb: LED max 30W

Light bulb not included

Input (V): 110-230



URBI ET ORBI BASED IN GREECE
(+30) 210 4520178

INFO@URBIETORBI.GR

THESSALONIKIS 61, 18233 ATHENS
WWW.URBIETORBI.GR

MACEO T CONCRETE TABLE LAMP



ABOUT THE PRODUCT

Maceo T table lamp was designed by Urbi et Orbi studio in 2016, as part of the FUNKY collection.

Maceo is a spot lamp made of cast concrete and black powder-painted steel. Its light diffuses into beams, spreading infinitely in all directions through the rotating links, reminiscent of the flowing sounds of a trumpet. The name “Maceo” pays homage to Maceo Parker, and the soul and jazz scene of the '70s where the entire Funky collection is inspired from.

This concrete table lamp is produced through our company’s Zero Waste Project developed over the past 3 years, with a recycling rate of 20%.

URBI ET ORBI BASED IN GREECE
(+30) 210 4520178

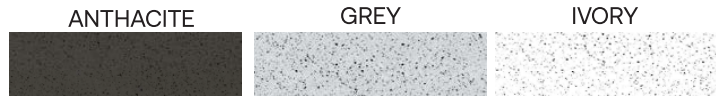

INFO@URBIETORBI.GR

THESSALONIKIS 61, 18233 ATHENS
WWW.URBIETORBI.GR

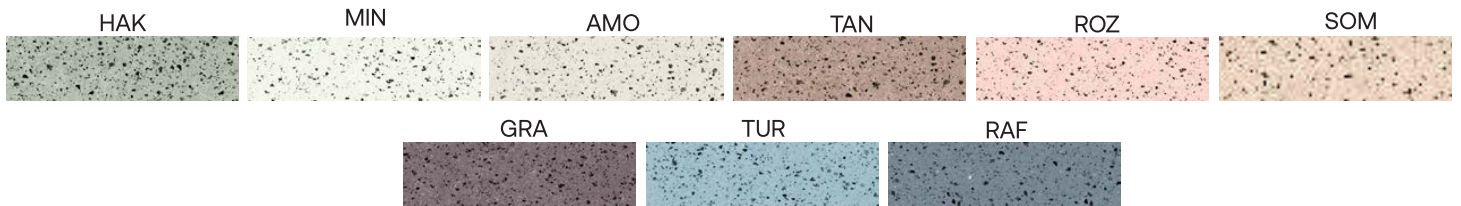
MACEO T CONCRETE TABLE LAMP

COLORS

SAND



OPTIONAL

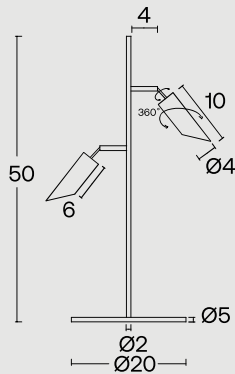


Colored in its mass with pigments



Every piece may exhibit color variations on its surface, as well as among other pieces of the same product or sample products.
The concrete surface exhibits surface voids that are caused by the air. This is a natural property of concrete.

SPECIFICATIONS



INDOOR

Cement's diameter: 4 cm | Cement's height: 10 cm

Base diameter: 20 cm | Height: 50cm

Turnable: 360 degrees rotation

Weight: 2 kg

Type of socket G9 X 2

Recommended light bulb: LED max 10W X 2

Light bulb not included

Input (V):110-230 | Type C plug (EU)

The steel base is available in black matte

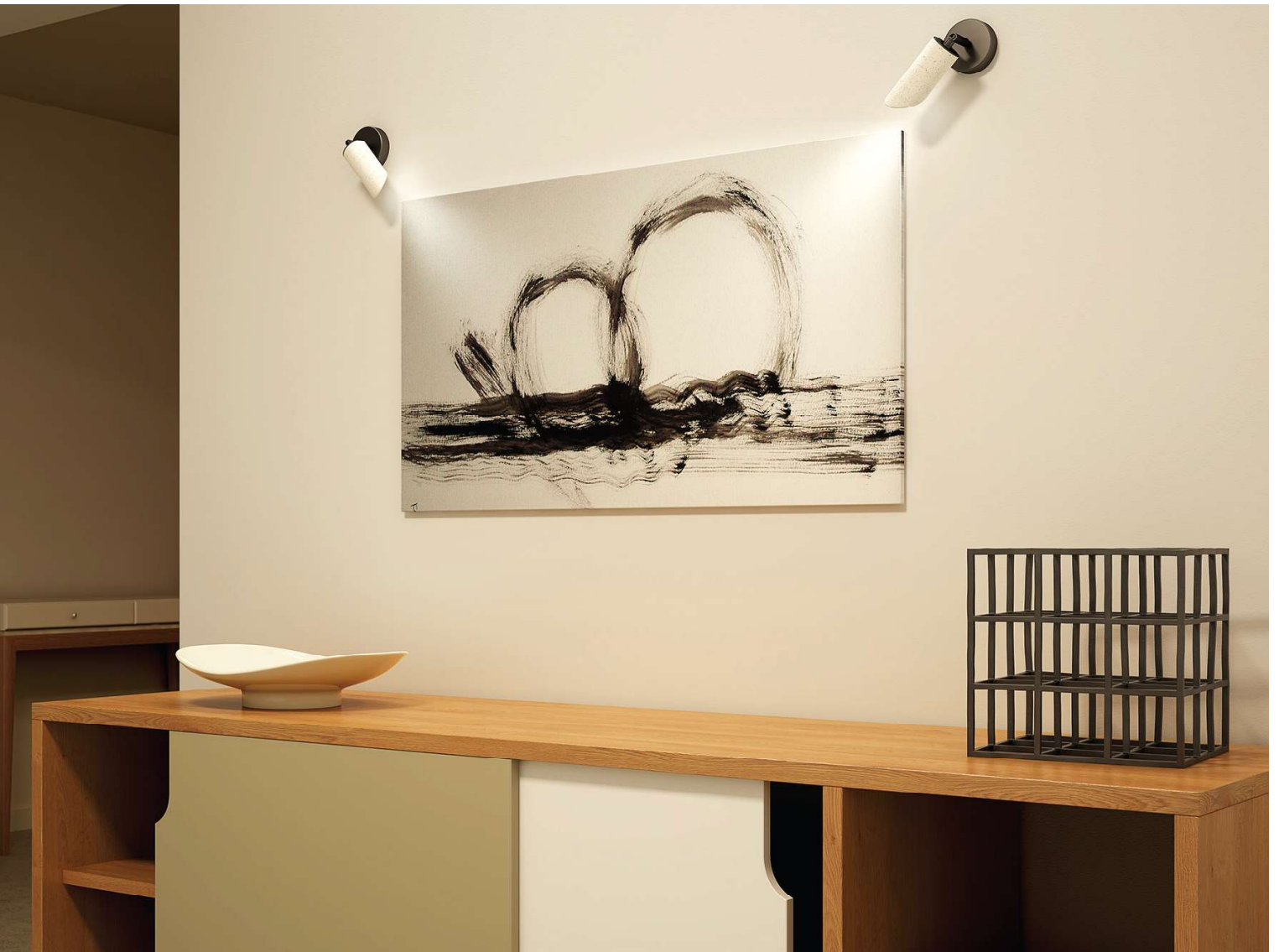


URBI ET ORBI BASED IN GREECE
(+30) 210 4520178

INFO@URBIETORBI.GR

THESSALONIKIS 61, 18233 ATHENS
WWW.URBIETORBI.GR

MACEO W CONCRETE WALL LIGHT



ABOUT THE PRODUCT

Maceo W wall lamp is designed by Urbi et Orbi Studio in 2016, as part of the FUNKY collection.

The Maceo W wall spotlight is a highly popular lighting fixture, primarily due to its functionality. The concrete piece, which adds value to its aesthetics, can be easily rotated by the user to direct the light beam wherever desired. Its light dances in ray beams reminiscent of the sounds of a trumpet. The name “Maceo” pays homage to Maceo Parker, and the soul and jazz scene of the '70s where the entire Funky collection is inspired.

Whether illuminating a specific area of the room or serving as discreet lighting at the edges of a bed, Maceo offers versatility and style. It is perfect for both residential and commercial indoor environments.

This concrete wall light fixture is produced through our company's Zero Waste Project developed over the past 3 years, with a recycling rate of 20%.



URBI ET ORBI BASED IN GREECE
(+30) 210 4520178

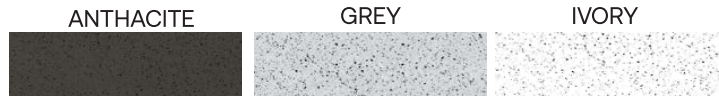
INFO@URBIETORBI.GR

THESSALONIKIS 61, 18233 ATHENS
WWW.URBIETORBI.GR

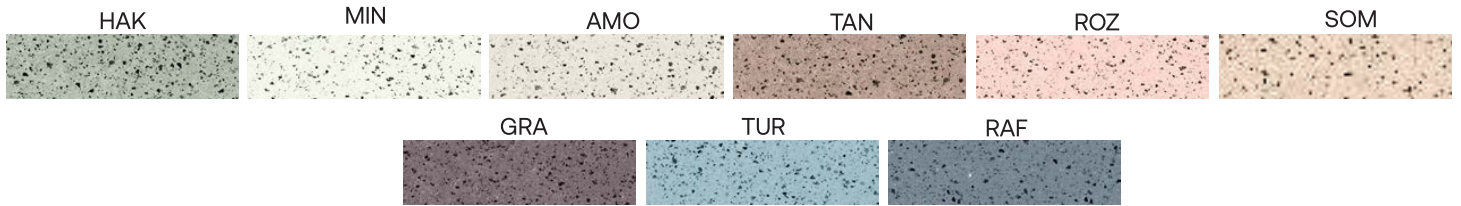
MACEO W CONCRETE WALL LIGHT

COLORS

SAND



OPTIONAL

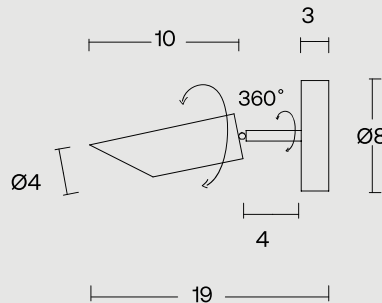


Colored in its mass with pigments



Every piece may exhibit color variations on its surface, as well as among other pieces of the same product or sample products.
The concrete surface exhibits surface voids that are caused by the air. This is a natural property of concrete.

SPECIFICATIONS



INDOOR

Cement's diameter: 4 cm | Cement's height: 10 cm

Rosette's diameter: 8 cm / Depth: 2.5 cm

Weight: 0,6kg

Turnable: 360 degrees rotation

Type of socket G9

Recommended light bulb: LED max 10W

Light bulb not included

Input (V): 110-230



URBI ET ORBI BASED IN GREECE
(+30) 210 4520178

INFO@URBIETORBI.GR

THESSALONIKIS 61, 18233 ATHENS
WWW.URBIETORBI.GR

MACEO W2 CONCRETE WALL LIGHT



ABOUT THE PRODUCT

Maceo W2 wall lamp is designed by Urbi et Orbi Studio in 2016, as part of the FUNKY collection.

Maceo wall spotlight is a highly popular lighting fixture, primarily due to its functionality. The concrete piece, which adds value to its aesthetics, can be easily rotated by the user to direct the light beam wherever desired. Its light dances in ray beams reminiscent of the sounds of a trumpet. The name “Maceo” pays homage to Maceo Parker, and the soul and jazz scene of the '70s where the entire Funky collection is inspired from.

Whether illuminating a specific area of the room or serving as discreet lighting at the edges of a bed, Maceo offers versatility and style. It is perfect for both residential and commercial indoor environments.

This concrete wall light fixture is produced through our company's Zero Waste Project developed over the past 3 years, with a recycling rate of 20%



URBI ET ORBI BASED IN GREECE
(+30) 210 4520178

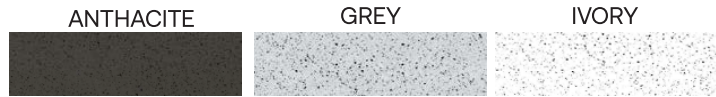
INFO@URBIETORBI.GR

THESSALONIKIS 61, 18233 ATHENS
WWW.URBIETORBI.GR

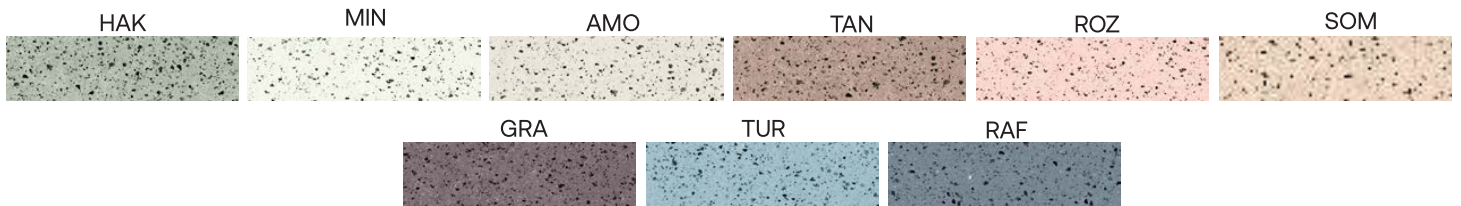
MACEO W2 CONCRETE WALL LIGHT

COLORS

SAND



OPTIONAL

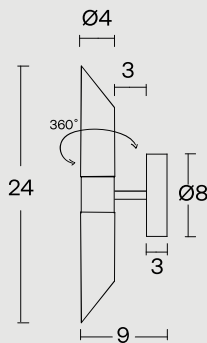


Colored in its mass with pigments



Every piece may exhibit color variations on its surface, as well as among other pieces of the same product or sample products.
The concrete surface exhibits surface voids that are caused by the air. This is a natural property of concrete.

SPECIFICATIONS



INDOOR

Cement's diameter: 4 cm | Cement's height: 10 cm

Rosette's diameter: 8 cm / Depth: 2.5 cm

Rotation: 360 degrees rotation

Weight: 0.5 kg

Type of socket G9 X 2

Recommended light bulb: LED max 10W X 2

Light bulb not included

Input (V):110-230



URBI ET ORBI BASED IN GREECE
(+30) 210 4520178

INFO@URBIETORBI.GR

THESSALONIKIS 61, 18233 ATHENS
WWW.URBIETORBI.GR

GHETTO C CONCRETE PENDANT LAMP



ABOUT THE PRODUCT

Ghetto-C pendant lamp is designed by Urbi et Orbi Studio in 2016, part of the FUNKY collection.

Its shape is carved from the heart of a sphere, maintaining a uniform thickness of 1 cm. Inspired by the 1970s music and culture, reminding us that when talking about any ghetto, every boundary is defined and shaped clearly by people for people.

Ghetto-C is a decorative lamp that adds to the aesthetic of a space, either as a standalone or in combination with multiple pieces.

The series is complemented by a wall lamp and a table lamp.

This concrete suspension lamp is produced through our company's Zero Waste Project developed over the past 3 years, with a recycling rate of 20%.



URBI ET ORBI BASED IN GREECE
(+30) 210 4520178

INFO@URBIETORBI.GR

THESSALONIKIS 61, 18233 ATHENS
WWW.URBIETORBI.GR

GHETTO C CONCRETE PENDANT LAMP

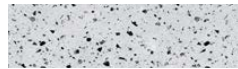
COLORS

SAND

ANTHRACITE



GREY

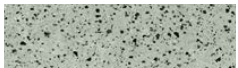


IVORY



OPTIONAL

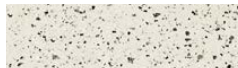
HAK



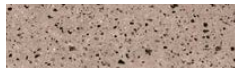
MIN



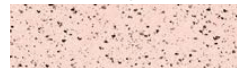
AMO



TAN



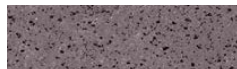
ROZ



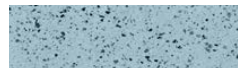
SOM



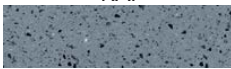
GRA



TUR



RAF



Colored in its mass with pigments



Every piece may exhibit color variations on its surface, as well as among other pieces of the same product or sample products.

The concrete surface exhibits surface voids that are caused by the air. This is a natural property of concrete.

SPECIFICATIONS

INDOOR

Diameter: 19 cm





Width: 5 cm

Edge thickness: 1 cm

Weight: 1 kg

Textile Cable: 1,9m max. (longer on demand)

Ceiling rose: Black Matte

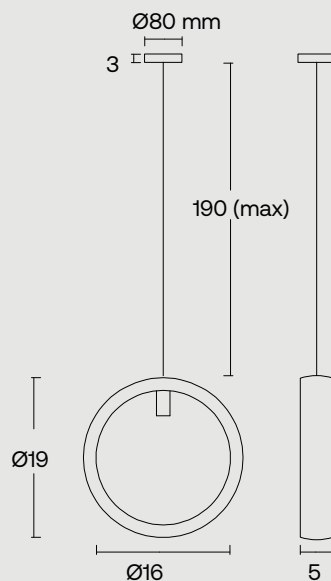
Cable Colors:    

Recommended light bulb

G9 LED max watt (W) 10

Light bulb not included

Input (V): 110-230



URBI ET ORBI BASED IN GREECE
(+30) 210 4520178

INFO@URBIETORBI.GR

THESSALONIKIS 61, 18233 ATHENS
WWW.URBIETORBI.GR

GHETTO T CONCRETE TABLE LAMP



ABOUT THE PRODUCT

Ghetto-T table lamp is designed by Urbi et Orbi Studio in 2016, part of the FUNKY collection.

Its shape is carved from the heart of a sphere, maintaining a uniform thickness of 1 cm. Inspired by the 1970s music and culture, reminding us that when talking about any ghetto, every boundary is defined and shaped clearly by people for people.

Ghetto-T is a table lamp that adds to the aesthetic of a space. The series is complemented by a wall lamp and a suspension lamp.

This concrete table lamp is produced through our company's Zero Waste Project developed over the past 3 years, with a recycling rate of 20%.



URBI ET ORBI BASED IN GREECE
(+30) 210 4520178

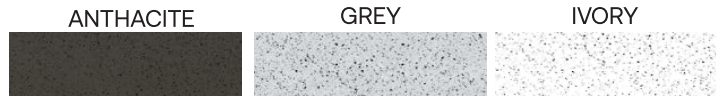
INFO@URBIETORBI.GR

THESSALONIKIS 61, 18233 ATHENS
WWW.URBIETORBI.GR

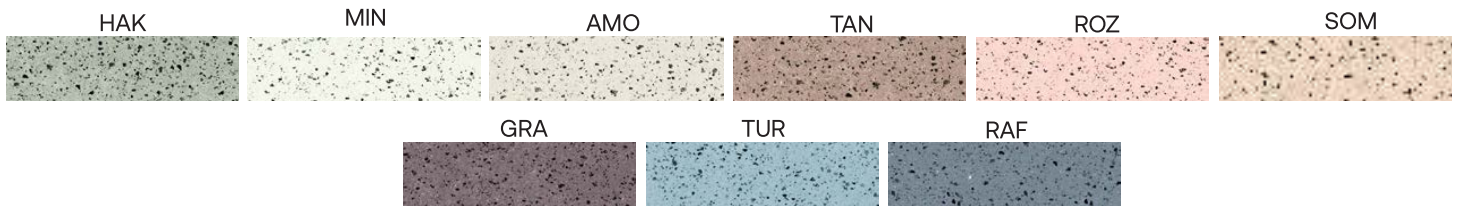
GHETTO T CONCRETE TABLE LAMP

COLORS

SAND



OPTIONAL

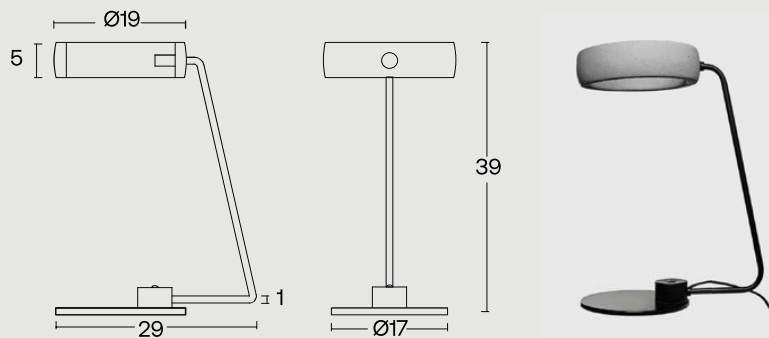


Colored in its mass with pigments



Every piece may exhibit color variations on its surface, as well as among other pieces of the same product or sample products.
The concrete surface exhibits surface voids that are caused by the air. This is a natural property of concrete.

SPECIFICATIONS



INDOOR

Diameter: 19 cm | Width: 5 cm

Height: 39 cm

Base diameter: 17 cm

Weight: 1.3 kg

Type of socket G9

Recommended light bulb: LED max 10W

Light bulb not included

Input (V): 110-230 | Type C plug (EU)

Steel Base: Black Matte



URBI ET ORBI BASED IN GREECE
(+30) 210 4520178

INFO@URBIETORBI.GR

THESSALONIKIS 61, 18233 ATHENS
WWW.URBIETORBI.GR

GHETTO W CONCRETE WALL LIGHT



ABOUT THE PRODUCT

Ghetto-W wall lamp is designed by Urbi et Orbi Studio in 2016, part of the FUNKY collection.

Its shape is carved from the heart of a sphere, maintaining a uniform thickness of 1 cm. Inspired by the 1970s music and culture, reminding us that when talking about any ghetto, every boundary is defined and shaped clearly by people for people.

Ghetto-W is a wall lamp that adds to the aesthetic of a space. The series is complemented by a table lamp and a suspension lamp.

This concrete wall light fixture is produced through our company's Zero Waste Project developed over the past 3 years, with a recycling rate of 20%.



URBI ET ORBI BASED IN GREECE
(+30) 210 4520178

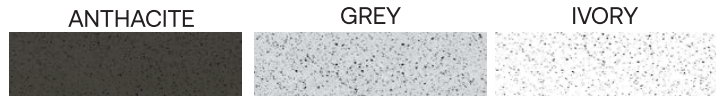
INFO@URBIETORBI.GR

THESSALONIKIS 61, 18233 ATHENS
WWW.URBIETORBI.GR

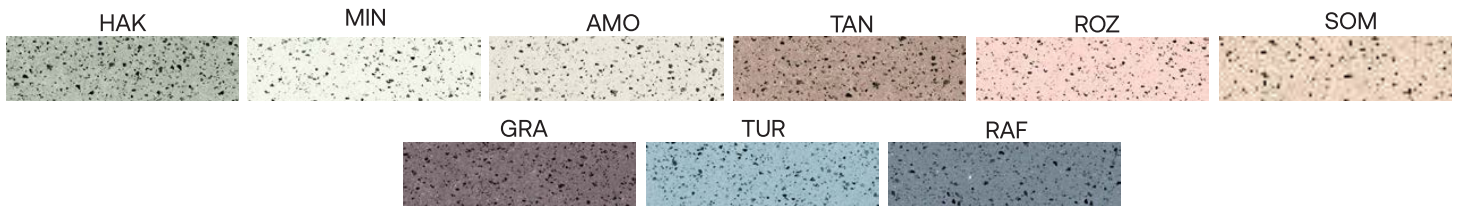
GHETTO W CONCRETE WALL LIGHT

COLORS

SAND



OPTIONAL

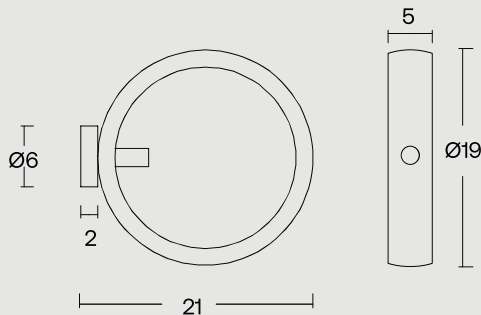


Colored in its mass with pigments



Every piece may exhibit color variations on its surface, as well as among other pieces of the same product or sample products.
The concrete surface exhibits surface voids that are caused by the air. This is a natural property of concrete.

SPECIFICATIONS



INDOOR

Diameter: 19 cm

Depth: 21 cm

Weight: 1 kg

Type of socket G9

Recommended light bulb: LED max 10W

Light bulb not included

Input (V): 110-230



URBI ET ORBI BASED IN GREECE
(+30) 210 4520178

INFO@URBIETORBI.GR

THESSALONIKIS 61, 18233 ATHENS
WWW.URBIETORBI.GR

TESSERA CONCRETE WALL PATTERN



ABOUT THE PRODUCT

The TESSERA concrete decorative wall pattern, designed by Urbi et Orbi Studio in 2016 as part of the Funky collection, goes back to the iconic symbols of the 1970s.

This pattern is the most characteristic symbol of the '70s. It embodied a sense of optimism for the future, inspired by the space age and technological advancements of the time, envisioning a bright and colorful tomorrow. Often allowing for personal expression and creativity, geometric pop designs were used in fashion DIY and interior decoration to make bold statements and stand out from the crowd.

The psychedelic movement of the 1960's heavily influenced the design aesthetic of the 1970s, emphasizing mind-altering experiences and visual distortions. Geometric patterns were frequently combined with psychedelic art to create mesmerizing, trippy graphics.

Tessera, meaning 'four' in Greek, comprises four concrete pieces in different dimensions. These pieces can be cut or left as is during installation, resulting in a unique effect on the wall due to the various combinations possible. One or two sets of TESSERA, whether in the same color or not, can adorn an empty wall and transform it into an artwork. Easily mounted with crystallized transparent glue, TESSERA offers a versatile and visually striking option for interior decoration.

This product is produced through our company's Zero Waste Project developed over the past 3 years, with a recycling rate of 20%.cling rate of 20%.



URBI ET ORBI BASED IN GREECE
(+30) 210 4520178

INFO@URBIETORBI.GR

THESSALONIKIS 61, 18233 ATHENS
WWW.URBIETORBI.GR



All rights reserved."Urbi et Orbi" brand and logos are registered trademarks. The industrial models of the product, the designation and the product photos are protected by the applicable copyright laws.
Urbi et Orbi reserves the right, in order to improve the capacities of the products, to make modifications to them, as if reference the raw materials, dimensions, weight, qualities or features, without prior notice.

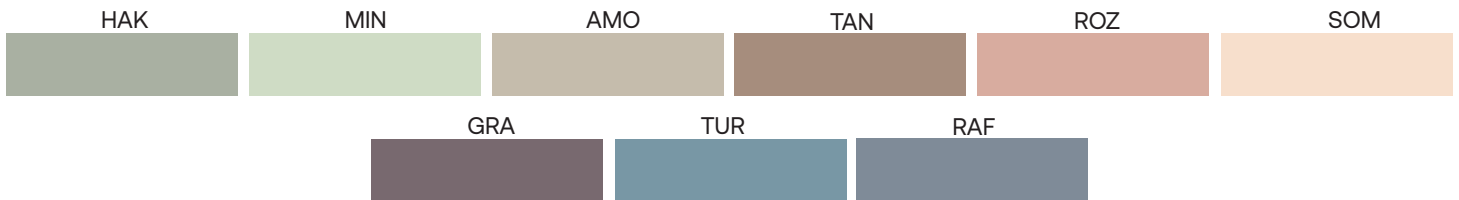
TESSERA CONCRETE WALL PATTERN

COLORS

BASIC



OPTIONAL



SAND



Colored in its mass with pigments

Every piece may exhibit color variations on its surface, as well as among other pieces of the same product or sample products.

The concrete surface exhibits surface voids that are caused by the air. This is a natural property of concrete.

SPECIFICATIONS

OUTDOOR/INDOOR

Dimensions/Weight

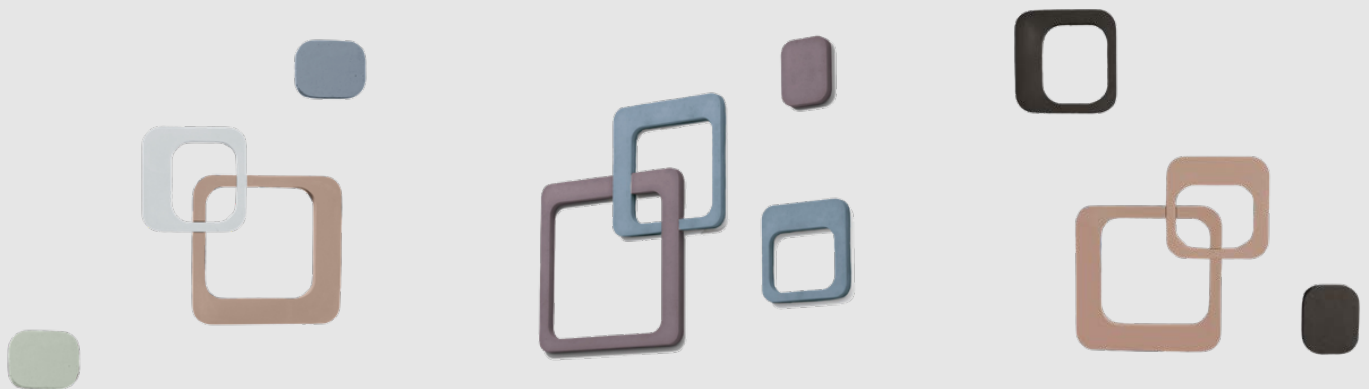
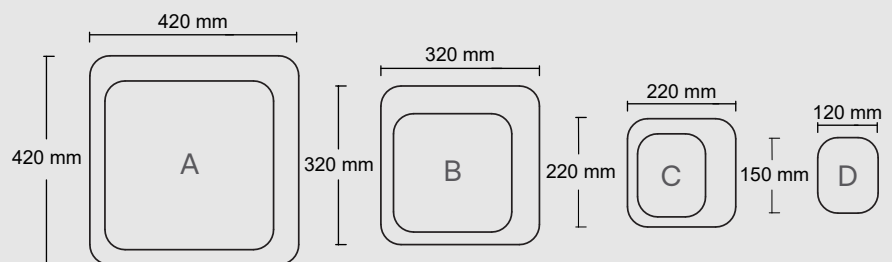
UNIT A: 42x42 cm-2kg

UNIT B: 32x32 cm-1,3kg

UNIT C: 22x22 cm- 0,7kg

UNIT D: 15x12 cm-1kg

Standard Thickness: 2cm



URBI ET ORBI BASED IN GREECE
(+30) 210 4520178

INFO@URBIETORBI.GR

THESSALONIKIS 61, 18233 ATHENS
WWW.URBIETORBI.GR