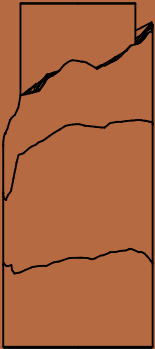


TECHNICAL SHEET
SPECIFICATIONS
AFTERCARE



STRATA
CONCRETE VASE

STRATA CONCRETE VASE



ABOUT THE PRODUCT

Strata series was designed by CTRLZAK for the Urbi et Orbi Medius Terra collection.

It is inspired by natural geological formations (stratification).. It captures sedimentation, erosion, and volcanic activity through stacked layers, symbolizing the passage of time. The design is inspired by the Mediterranean region's diverse landscapes and geological phenomena. The overlapping layers of mineral compositions represent the geological history of the Mediterranean and our planet. Strata encourages reflection on our perception of time through geology and the natural world.

Strata vase is designed for outdoor/indoor use and features a unique finish that can only be achieved with concrete as a base material. The inner part is oxide-treated steel, 5mm thick, finished with a transparent varnish suitable for vase use. Each piece is unique and different, holding onto the design concept. It was a construction challenge for us, and we loved it from the first moment when it was still an idea. We developed special production techniques to approach such a natural appearance.

Through the nature of concrete, this object acquires its character; the passage of time will leave its footprint which will enhance its beauty even further.

Ideal for commercial or residential spaces, it is available in a cold and warm color palette.

This concrete vase is produced through our company's Zero Waste Project developed over the past 3 years, with a recycling rate of 20%.



URBI ET ORBI BASED IN GREECE
(+30) 210 4520178

INFO@URBIETORBI.GR

THESSALONIKIS 61, 18233 ATHENS
WWW.URBIETORBI.GR

STRATA CONCRETE VASE

COLORS

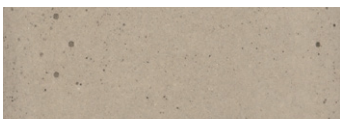
COOL



WARM



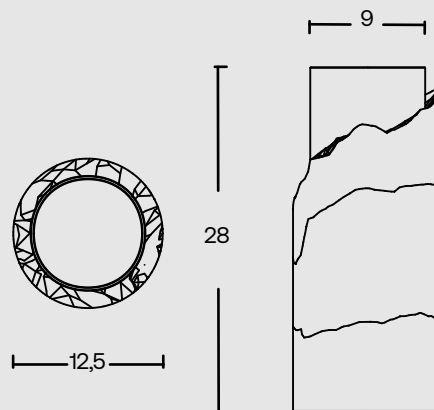
Colored in its mass with pigments



Every piece may exhibit color variations on its surface, as well as among other pieces of the same product or sample products.

The concrete surface exhibits surface voids that are caused by the air. This is a natural property of concrete.

SPECIFICATIONS



Outdoor / Indoor

Diameter: base 12,5 cm / top 9 cm

Height: 28 cm

Weight: 4,5 kg

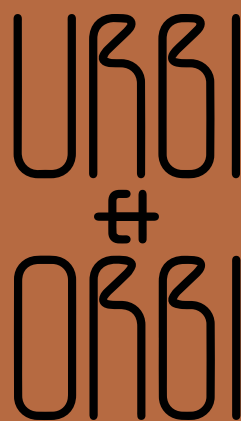


URBI ET ORBI BASED IN GREECE
(+30) 210 4520178

INFO@URBIETORBI.GR



THESSALONIKIS 61, 18233 ATHENS
WWW.URBIETORBI.GR



All rights reserved."Urbi et Orbi" brand and logos are registered trademarks. The industrial models of the product, the designation and the product photos are protected by the applicable copyright laws.
Urbi et Orbi reserves the right, in order to improve the capacities of the products, to make modifications to them, as if reference the raw materials, dimensions, weight, qualities or features, without prior notice.