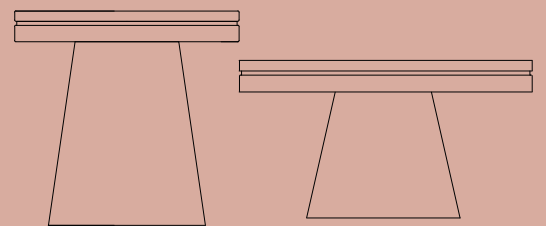


URBI  
+  
ORBI

FORMED  
IN THE  
MEDITERRANEAN,  
EXPRESSED  
TO THE WORLD



FURNITURE

# TERRA INCOGNITA CONCRETE-TERRAZZO SIDE TABLE



## ABOUT THE PRODUCT

Terra Incognita terrazzo side table was designed by Sotiris Lazou Design Studio in 2022.

The Terra Incognita table earns its name from its defining feature, the terrazzo finish. “Incognita,” meaning “unknown” or “unexplored,” evokes human curiosity. The designer, Sotiris Lazou focused on the dichromatism of the base, adding a distinct visual interest to its appearance. Additionally, the slightly raised edge around the perimeter enhances the overall harmony of the design.

This concrete table is produced through our company’s Zero Waste Project developed over the past 3 years, with a recycling rate from 20% to 50%. Suitable for indoors and outdoors.



URBI ET ORBI BASED IN GREECE  
(+30) 210 4520178

INFO@URBIETORBI.GR

THESSALONIKIS 61, 18233 ATHENS  
WWW.URBIETORBI.GR

# TERRA INCOGNITA CONCRETE-TERRAZZO SIDE TABLE

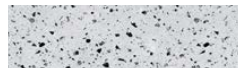
## COLORS

### BASIC

ANTHRACITE



GREY

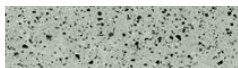


IVORY



### OPTIONAL

HAK



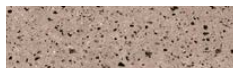
MIN



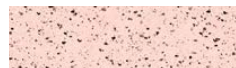
AMO



TAN



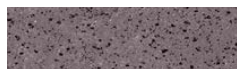
ROZ



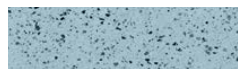
SOM



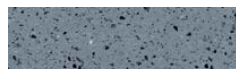
GRA



TUR



RAF



## TERRAZO

WHITE



BLACK



### OPTIONAL

AMO



GREY



HAK



MIN



SOM



GRA



TAN



ROZ



TUR



RAF

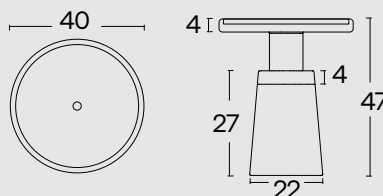


Colored in its mass with pigments

Every piece may exhibit color variations on its surface, as well as among other pieces of the same product or sample products.

The concrete surface exhibits surface voids that are caused by the air. This is a natural property of concrete.

## SPECIFICATIONS



INDOOR / OUTDOOR

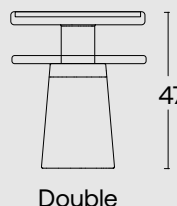
Base Diameter: 22 cm

Top Diameter: 40 cm

Height: 47 cm

Weight: 20 kg / double 30 kg

Material: polished concrete terrazzo



Double



URBI ET ORBI BASED IN GREECE  
(+30) 210 4520178

INFO@URBIETORBI.GR

THESSALONIKIS 61, 18233 ATHENS  
WWW.URBIETORBI.GR



# SAROMA CONCRETE SIDE TABLE



## ABOUT THE PRODUCT

SAROMA side table was designed by Sotiris Lazou Design Studio for Urbi et Orbi Medius Terra collection in 2024.

SAROMA stands out as a testament of living. A move of sweeping (σάρωμα) was behind the inspiration of this product. Saroma concrete side table encapsulates the natural charm of the Mediterranean while invoking memories and exuding warmth and authenticity. Crafted with raw materials sourced from natural straw brooms, SAROMA boasts a unique texture and visual appeal, evoking a sense of nostalgia and familiarity.

Combining traditional elements with contemporary design, SAROMA is not just a practical furniture piece but also a representation of cultural heritage and the beauty of sustainable design. Saroma has a hidden shelf, which is one more surprise of its character. The concrete tabletop represents durability and practicality.

Ideal for commercial or residential spaces, suitable for both indoors or outdoors.

This concrete table is produced through our company's Zero Waste Project developed over the past 3 years, with a recycling rate of 20%.



URBI ET ORBI BASED IN GREECE  
(+30) 210 4520178

INFO@URBIETORBI.GR

THESSALONIKIS 61, 18233 ATHENS  
WWW.URBIETORBI.GR

# SAROMA CONCRETE SIDE TABLE

## COLORS

### SAND

ANTHRACITE



GREY

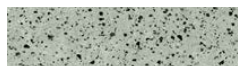


IVORY



### OPTIONAL

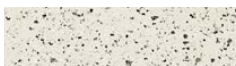
HAK



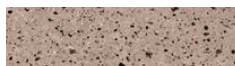
MIN



AMO



TAN



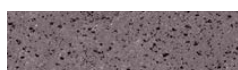
ROZ



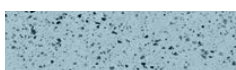
SOM



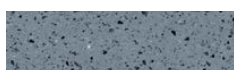
GRA



TUR



RAF



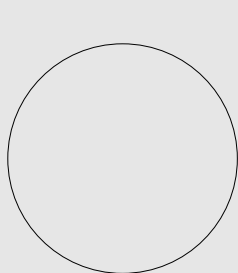
Colored in its mass with pigments

Every piece may exhibit color variations on its surface, as well as among other pieces of the same product or sample products.

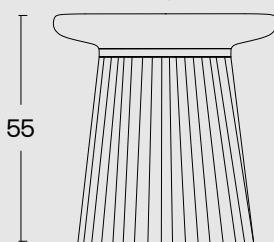
The concrete surface exhibits surface voids that are caused by the air. This is a natural property of concrete.

## SPECIFICATIONS

INDOOR / OUTDOOR



45



55



Diameter: 45 cm

Height: 55 cm

Weight: 18 kg



URBI ET ORBI BASED IN GREECE  
(+30) 210 4520178

INFO@URBIETORBI.GR

THESSALONIKIS 61, 18233 ATHENS  
WWW.URBIETORBI.GR



# SUNDTAN CONCRETE SIDE TABLE



## ABOUT THE PRODUCT

SunDtan concrete coffee table was Designed by Urbi et Orbi Studio in 2022.

The SunDtan table playfully nods to the term “suntan,” as it’s specifically crafted for outdoor use, perfect for poolside or beach settings due to concrete’s durability against water, sea, and sunlight. To avoid color-related misunderstandings, we added a “D” to the name, symbolizing vitamin D and emphasizing its usage under the sun.

Its creation stemmed from a playful experiment in the workshop, aiming to complement the concept with a relatively organic shape. To achieve this, we used a cylindrical rubber mold, thin enough not to fully support the weight of the concrete, allowing it to overflow during casting and resulting in the desired curves.

SunDtan is naturally shaped when concrete as a raw material is allowed to act under our guidance; therefore, it is a side table that embodies the essence of concrete, both in design and functionality.

This product is produced through our company’s Zero Waste Project developed over the past 3 years, with a recycling rate of 20%.

Suitable for indoors and outdoors.



URBI ET ORBI BASED IN GREECE  
(+30) 210 4520178

INFO@URBIETORBI.GR

THESSALONIKIS 61, 18233 ATHENS  
WWW.URBIETORBI.GR

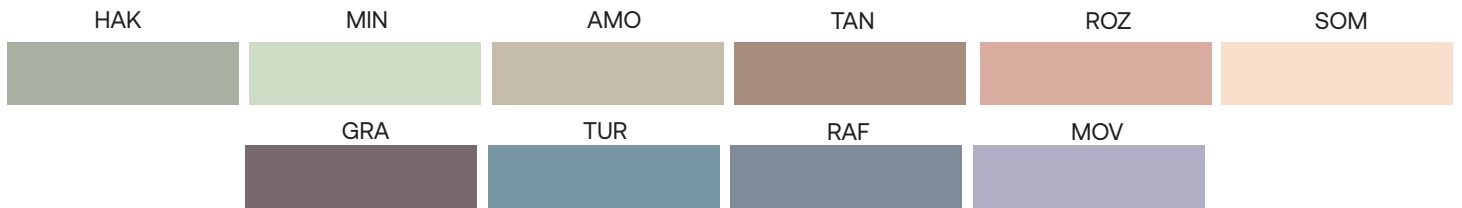
# SUNDTAN CONCRETE SIDE TABLE

## COLORS

### BASIC



### OPTIONAL



### SAND



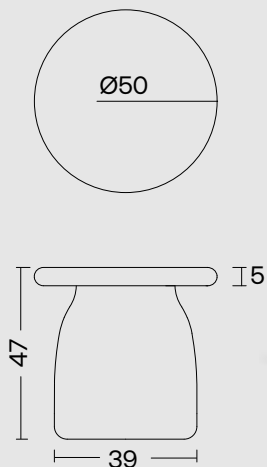
Colored in its mass with pigments

Every piece may exhibit color variations on its surface, as well as among other pieces of the same product or sample products.

The concrete surface exhibits surface voids that are caused by the air. This is a natural property of concrete.

## SPECIFICATIONS

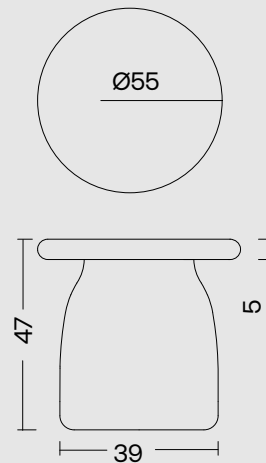
### INDOOR / OUTDOOR



Diameter: 50 cm

Height: 47 cm (± 2%)

Weight: 35kg (± 2%)



Diameter: 55 cm

Height: 47 cm (± 2%)

Weight: 35kg (± 2%)



URBI ET ORBI BASED IN GREECE  
(+30) 210 4520178

INFO@URBIETORBI.GR

THESSALONIKIS 61, 18233 ATHENS  
WWW.URBIETORBI.GR



# STRATA CONCRETE TABLES



## ABOUT THE PRODUCT

Strata series was designed by CTRLZAK for the Urbi et Orbi Medius Terra collection in 2024.

It is inspired by natural geological formations (stratification). It captures sedimentation, erosion, and volcanic activity through stacked layers, symbolizing the passage of time. The design is inspired by the Mediterranean region's diverse landscapes and geological phenomena. The overlapping layers of mineral compositions represent the geological history of the Mediterranean and our planet. Strata encourages reflection on our perception of time through geology and the natural world.

The Strata concrete tables are designed for indoor and outdoor use and features a unique finish that can only be achieved with concrete as a base material. Each piece is unique and different, holding onto the design concept. It was a construction challenge for us, and we loved it from the first moment when it was still an idea. We developed special production techniques to approach such a natural appearance.

Each piece is unique and different, holding onto the design concept. Due to the nature of concrete, this table acquires its character; the passage of time will enhance its beauty even further.

Ideal for commercial or residential spaces, Strata table comes in various sizes, making it suitable as either a coffee table or a dining table.

This concrete table is produced through our company's Zero Waste Project developed over the past 3 years, with a recycling rate of 20%.



URBI ET ORBI BASED IN GREECE  
(+30) 210 4520178

INFO@URBIETORBI.GR

THESSALONIKIS 61, 18233 ATHENS  
WWW.URBIETORBI.GR



# STRATA

## CONCRETE TABLES

### COLORS



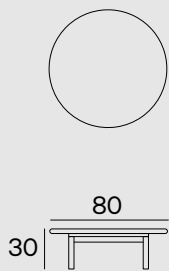
Colored in its mass with pigments

Every piece may exhibit color variations on its surface, as well as among other pieces of the same product or sample products.

The concrete surface exhibits surface voids that are caused by the air. This is a natural property of concrete.

### SPECIFICATIONS

INDOOR / OUTDOOR

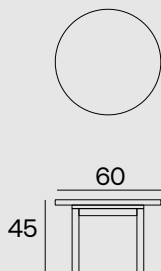


COFFEE TABLE

Height: 30 cm

Diameter: 80 cm

Weight: 44 kg

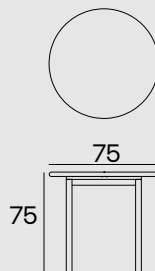


SIDE TABLE

Height: 45 cm

Diameter: 60 cm

Weight: 26 kg

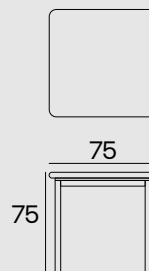


ROUND DINING TABLE

Height: 75 cm

Diameter: 75 cm

Weight: 40 kg

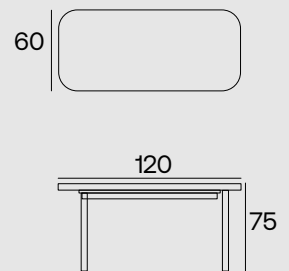


DINING TABLE

Height: 75 cm

Size: 75 cm x 75 cm

Weight: 52 kg



RECTANGULAR DINING TABLE

Height: 75 cm

Size: 120 cm x 60cm

Weight: 65 kg



URBI ET ORBI BASED IN GREECE  
(+30) 210 4520178

INFO@URBIETORBI.GR

THESSALONIKIS 61, 18233 ATHENS  
WWW.URBIETORBI.GR

# STRATA CONCRETE STOOL



## ABOUT THE PRODUCT

Strata stool/side table was designed by CTRLZAK for the Urbi et Orbi Medius Terra collection in 2024.

Strata is a series inspired by natural geological formations (stratification). It captures sedimentation, erosion, and volcanic activity through stacked layers, symbolizing the passage of time. The design is inspired by the Mediterranean region's diverse landscapes and geological phenomena. The overlapping layers of mineral compositions represent the geological history of the Mediterranean and our planet. Strata encourages reflection on our perception of time through geology and the natural world.

The Strata concrete stool/side table is designed for indoor and outdoor use and features a unique finish that can only be achieved with concrete as a base material. Each piece is unique and different, holding onto the design concept. It was a construction challenge for us, and we loved it from the first moment when it was still an idea. We developed special production techniques to approach such a natural appearance.

Ideal for commercial or residential spaces, available in a cool and warm color palette. Each piece is unique and different, holding onto the design concept. Due to the nature of concrete, this stool acquires its character; the passage of time will age it naturally and will enhance its beauty even further. This concrete table is produced through our company's Zero Waste Project developed over the past 3 years, with a recycling rate of 20%.



URBI ET ORBI BASED IN GREECE  
(+30) 210 4520178

INFO@URBIETORBI.GR

THESSALONIKIS 61, 18233 ATHENS  
WWW.URBIETORBI.GR



# STRATA CONCRETE STOOL

## COLORS

### WARM FINISHES



### COOL FINISHES



Colored in its mass with pigments

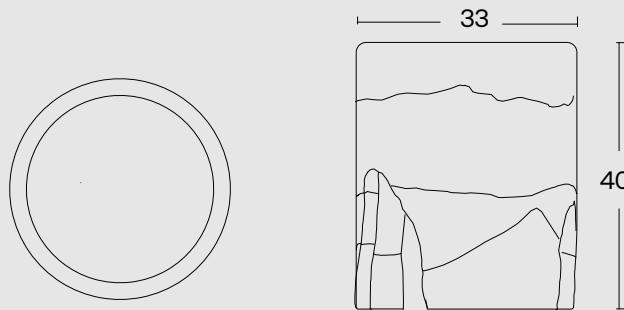
Every piece may exhibit color variations on its surface, as well as among other pieces of the same product or sample products.

The concrete surface exhibits surface voids that are caused by the air. This is a natural property of concrete.



## SPECIFICATIONS

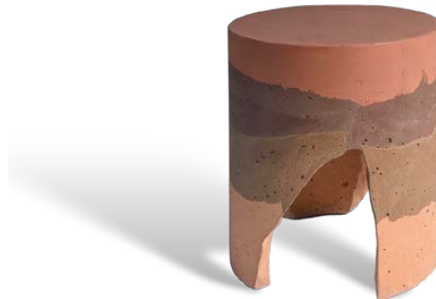
INDOOR / OUTDOOR



Diameter: 33 cm

Height: 40 cm

Weight: 24 kg



URBI ET ORBI BASED IN GREECE  
(+30) 210 4520178

INFO@URBIETORBI.GR

THESSALONIKIS 61, 18233 ATHENS  
WWW.URBIETORBI.GR

# LEGANTE CONCRETE TABLES



## ABOUT THE PRODUCT

Legante table series is designed by CTRLZAK for Urbi et Orbi Medius Terra collection in 2024

The Legante tables are crafted from cast concrete, combined with pieces of materials sourced from the remnants of a nearby marble workshop and a traditional ceramic studio, adding an extra dimension of sustainability to their dynamic inspiration. This fusion creates a contemporary terrazzo, reflecting the diverse cultural mosaic of the Mediterranean basin. People sailing across its waters exchanged goods and knowledge, leaving traces of their passing, lifestyles, and constructions, building cities with local stones, terracotta bricks, and tiles.

These coffee and dining tables boast a distinctive aesthetic that revitalizes the timeless utility of the materials, transforming the space into a gallery of emotions and memories.

Ideal for both indoor and outdoor use, they are available in various dimensions and variations, as coffee tables or dining tables.

This concrete table is produced through our company's Zero Waste Project developed over the past 3 years, with a recycling rate of 20%-40%.



URBI ET ORBI BASED IN GREECE  
(+30) 210 4520178

INFO@URBIETORBI.GR

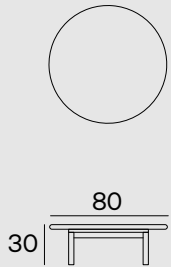
THESSALONIKIS 61, 18233 ATHENS  
WWW.URBIETORBI.GR



# LEGANTE CONCRETE TABLES

## SPECIFICATIONS

INDOOR / OUTDOOR

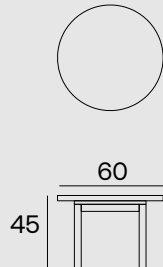


COFFEE TABLE

Height: 30 cm

Diameter: 80 cm

Weight: 54 kg

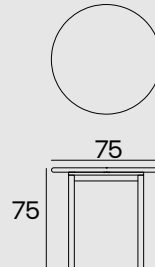


SIDE TABLE

Height: 45 cm

Diameter: 60 cm

Weight: 26 kg

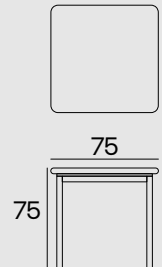


ROUND DINING TABLE

Height: 75 cm

Diameter: 75 cm

Weight: 49 kg



DINING TABLE

Height: 75 cm

Size: 75 cm x 75 cm

Weight: 62 kg



Colored in its mass with pigments

Every piece may exhibit color variations on its surface, as well as among other pieces of the same product or sample products.

The concrete surface exhibits surface voids that are caused by the air. This is a natural property of concrete.



URBI ET ORBI BASED IN GREECE  
(+30) 210 4520178

INFO@URBIETORBI.GR

THESSALONIKIS 61, 18233 ATHENS  
WWW.URBIETORBI.GR

# KAMARA CONCRETE SIDE TABLES



## ABOUT THE PRODUCT

Kamara table series are designed by Sotiris Lazou Design Studio for Urbi et Orbi Medius Terra collection in 2024.

Available in two variations – as a side table and a flower stand – Kamara concrete tables draw inspiration from architectural elements featuring characteristic arches of Santorini and other Cycladic Greek islands. Infused with elements of bohemian luxury, these tables effortlessly blend elegance with comfort.

The Kamara side tables are made from concrete, capturing the natural charm of the Mediterranean and exuding warmth and authenticity. By blending traditional elements with contemporary design, Kamara is not just practical furniture, but also a celebration of cultural heritage and sustainable design principles. The durability and practicality of concrete further enhance its appeal.

Ideal for commercial or residential spaces, the Kamara series can be used indoors or outdoors.

This concrete table lamp is produced through our company's Zero Waste Project developed over the past 3 years, with a recycling rate of 20%.



URBI ET ORBI BASED IN GREECE  
(+30) 210 4520178

INFO@URBIETORBI.GR

THESSALONIKIS 61, 18233 ATHENS  
WWW.URBIETORBI.GR



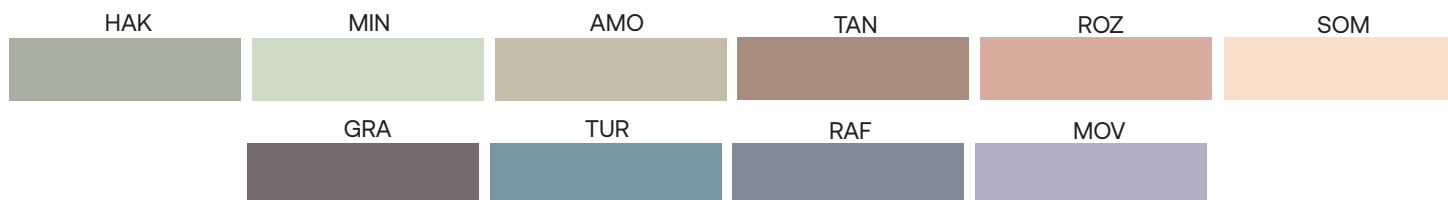
# KAMARA CONCRETE SIDE TABLES

## COLORS

### BASIC



### OPTIONAL



### SAND



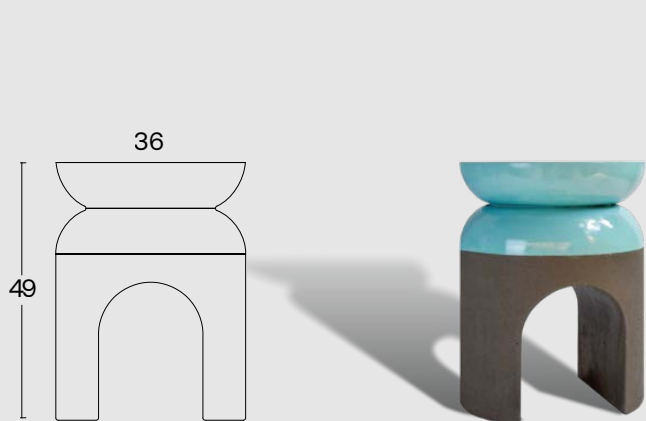
Colored in its mass with pigments

Every piece may exhibit color variations on its surface, as well as among other pieces of the same product or sample products.

The concrete surface exhibits surface voids that are caused by the air. This is a natural property of concrete.

## SPECIFICATIONS

INDOOR / OUTDOOR

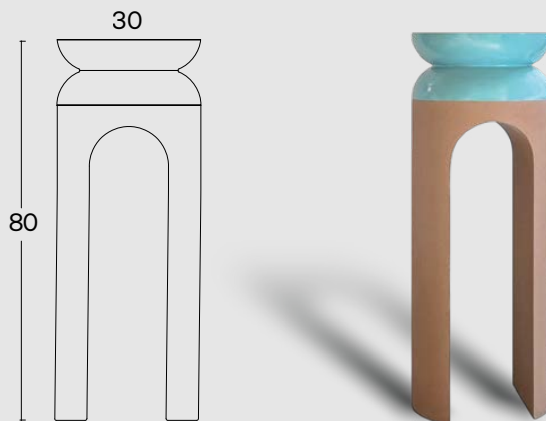


SIDE TABLE

Diameter: 36 cm

Height: 49 cm

Weight: 35 kg



FLOWER STAND

Diameter: 30 cm

Height: 80 cm

Weight: 44 kg

The bottom is colored in a shade from either the Basic or Optional color range.

The top is painted in all available glossy finishes from the RAL color chart.

Also available on demand: monochromatic finishes using any shade from the Basic or Optional range.



URBI ET ORBI BASED IN GREECE  
(+30) 210 4520178

INFO@URBIETORBI.GR

THESSALONIKIS 61, 18233 ATHENS  
WWW.URBIETORBI.GR

# CUBE CONCRETE STOOL



## ABOUT THE PRODUCT

Cube concrete stool, designed by Sotiris Lazou Design Studio in 2022, is made of cast concrete.

Cube offers versatility as both a stool and a side table. Its distinctive feature lies in its pronounced curved angles. The plasticity of concrete uniquely captures and accentuates its shape, while a wide range of color options elevate its finish. This piece is suitable for both indoor and outdoor use, seamlessly blending into residential or commercial spaces and adding a touch of contemporary flair wherever it's positioned.

This product is produced through our company's Zero Waste Project developed over the past 3 years, with a recycling rate of 20%.



URBI ET ORBI BASED IN GREECE  
(+30) 210 4520178

INFO@URBIETORBI.GR

THESSALONIKIS 61, 18233 ATHENS  
WWW.URBIETORBI.GR



# CUBE CONCRETE STOOL

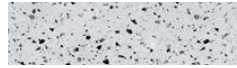
## COLORS

### SAND

ANTHRACITE



GREY

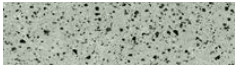


IVORY



### OPTIONAL

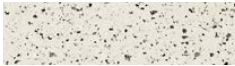
HAK



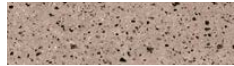
MIN



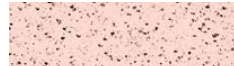
AMO



TAN



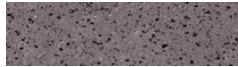
ROZ



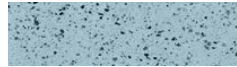
SOM



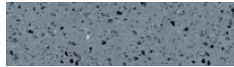
GRA



TUR



RAF

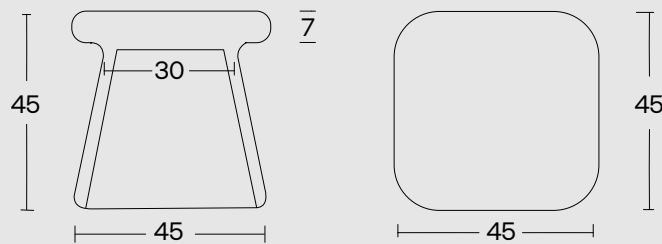


Colored in its mass with pigments

Every piece may exhibit color variations on its surface, as well as among other pieces of the same product or sample products.

The concrete surface exhibits surface voids that are caused by the air. This is a natural property of concrete.

## SPECIFICATIONS



Indoor/Outdoor

Size : 45 x 45 cm

Height: 45 cm

Weight: 42 kg



URBI ET ORBI BASED IN GREECE  
(+30) 210 4520178

INFO@URBIETORBI.GR

THESSALONIKIS 61, 18233 ATHENS  
WWW.URBIETORBI.GR

# DJEMBE CONCRETE COFFEE TABLE



## ABOUT THE PRODUCT

Djembe concrete coffee/side tables were designed by Urbi et Orbi Studio in 2023.

These dual low and high-rise concrete coffee/side tables inspired by the African handmade drum “Djembe”, combine the reinterpretation of this African artifact with our company’s philosophy of inclusivity. A constellation of diverse but harmonious shapes that are never the same, attest to the uniqueness of each product, complimenting a contemporary monochromatic conic base. Suitable for indoors and outdoors.

This product is produced through our company’s Zero Waste Project developed over the past 3 years, with a recycling rate of 20%.



URBI ET ORBI BASED IN GREECE  
(+30) 210 4520178

INFO@URBIETORBI.GR

THESSALONIKIS 61, 18233 ATHENS  
WWW.URBIETORBI.GR



# DJEMBE CONCRETE COFFEE TABLE

## COLORS



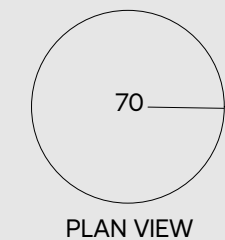
Colored in its mass with pigments

Every piece may exhibit color variations on its surface, as well as among other pieces of the same product or sample products.

The concrete surface exhibits surface voids that are caused by the air. This is a natural property of concrete.

## SPECIFICATIONS

INDOOR / OUTDOOR

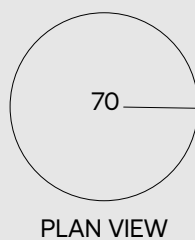


LOW TABLE

Diameter: 70 cm

Height: 38 cm

Weight: 33 kg

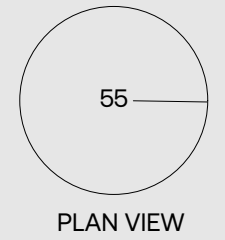


HIGH L

Diameter: 70 cm

Height: 53 cm

Weight: 43 kg



HIGH

Diameter: 55 cm

Height: 53 cm

Weight: 38 kg



URBI ET ORBI BASED IN GREECE  
(+30) 210 4520178

INFO@URBIETORBI.GR

THESSALONIKIS 61, 18233 ATHENS  
WWW.URBIETORBI.GR

# DJEMBE CONCRETE COFFEE TABLE



TOP / BASE: ANTHRACITE  
PATTERN: ANTHRACITE , IVORY, AMO



TOP / BASE: BEIGE  
PATTERN: BEIGE, ANTHRACITE , IVORY



TOP / BASE: AMO  
PATTERN: AMO, ANTHRACITE, IVORY



TOP: IVORY / BASE: AMO  
PATTERN: ANTHRACITE, IVORY, AMO



TOP: IVORY / BASE: GREY  
PATTERN: IVORY, GREY, ANTHRACITE



TOP / BASE: IVORY  
PATTERN: IVORY, GREY, ANTHRACITE



TOP / BASE: GREY  
PATTERN: IVORY, GREY, ANTHRACITE



TOP: GREY / BASE: IVORY  
PATTERN: IVORY, GREY, ANTHRACITE



# KION CONCRETE SIDE TABLE



## ABOUT THE PRODUCT

Kion side table, designed by Nikos G. Paleologos of Saint of Athens in 2023, is made of cast concrete.

The Kion table embodies a rationalistic approach to the utilitarian need for a side table, drawing inspiration from the Doric architecture of ancient Greece. Designed to elegantly capture the essence of ancient Greek architecture, it is structured and purposed to fulfill the evolved desires of the modern psyche.

This concrete table is produced through our company's Zero Waste Project developed over the past 3 years, with a recycling rate from 20%.  
Suitable for indoors and outdoors.



URBI ET ORBI BASED IN GREECE  
(+30) 210 4520178

INFO@URBIETORBI.GR

THESSALONIKIS 61, 18233 ATHENS  
WWW.URBIETORBI.GR

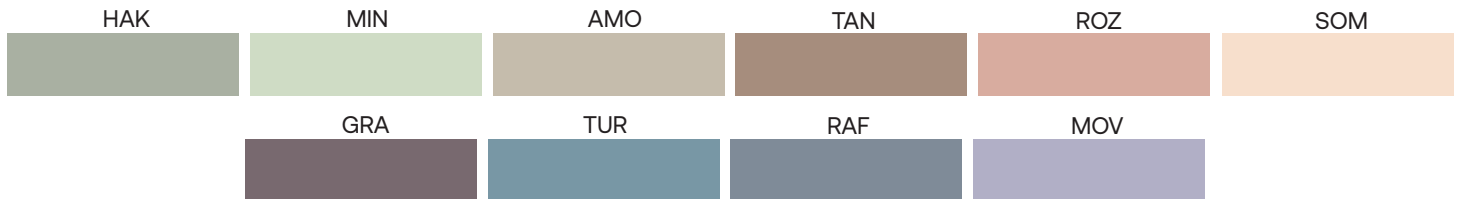
# KION CONCRETE SIDE TABLE

## COLORS

### BASIC



### OPTIONAL



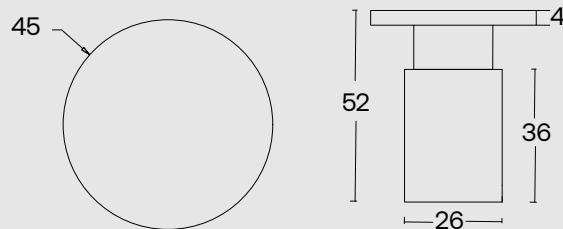
Colored in its mass with pigments



Every piece may exhibit color variations on its surface, as well as among other pieces of the same product or sample products.  
The concrete surface exhibits surface voids that are caused by the air. This is a natural property of concrete.

## SPECIFICATIONS

INDOOR / OUTDOOR



Diameter: 45 cm

Height: 52 cm

Weight: 30 kg



URBI ET ORBI BASED IN GREECE  
(+30) 210 4520178

INFO@URBIETORBI.GR

THESSALONIKIS 61, 18233 ATHENS  
WWW.URBIETORBI.GR



# JAR CONCRETE COFFEE TABLES



## ABOUT THE PRODUCT

Jar coffee tables are designed by Gian Paolo Venier for Urbi et Orbi Medius Terra collection in 2024.

Jar is a series of three coffee tables made of cast concrete and talks about the hands of the craftsman, the intelligent hands (The Craftsman -Richard Sennett). Inspired by the well-known traditional clay jars, it speaks of the imprecision of manual work by observing its beauty. The ratios of the measurements of these three tables are deliberately forced to give them a soft shape, which tells of the earth. In this case, concrete is treated like clay, a material that aspires to be natural consisting of natural components and therefore precious.

The hand-shaped glass on the top follows the organic perimeter shape and with its glossy appearance it gives the sensation of a serene liquid while at the same time, it is an elegant and functional detail.

Ideal for commercial or residential spaces, the Jar series can be used indoors or outdoors.

This concrete table is produced through our company's Zero Waste Project developed over the past 3 years, with a recycling rate of 20%.



URBI ET ORBI BASED IN GREECE  
(+30) 210 4520178

INFO@URBIETORBI.GR

THESSALONIKIS 61, 18233 ATHENS  
WWW.URBIETORBI.GR

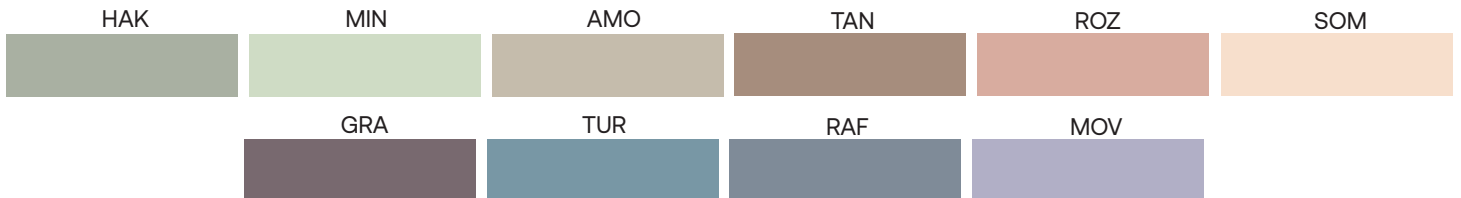
# JAR CONCRETE COFFEE TABLES

## COLORS

### BASIC



### OPTIONAL



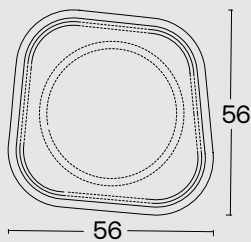
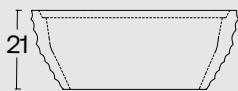
Colored in its mass with pigments



Every piece may exhibit color variations on its surface, as well as among other pieces of the same product or sample products.  
The concrete surface exhibits surface voids that are caused by the air. This is a natural property of concrete.

## SPECIFICATIONS

### INDOOR / OUTDOOR

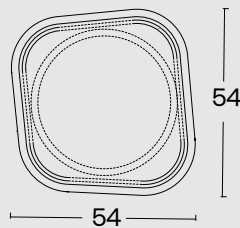
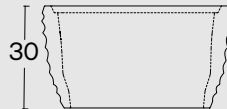


#### JAR LOW

Size: 56 x 56 cm

Height: 21 cm

Weight: 22 kg

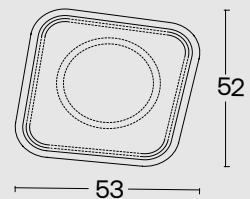
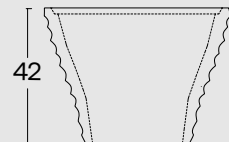


#### JAR MEDIUM

Size: 54 x 54 cm

Height: 30 cm

Weight: 28 kg



#### JAR TALL

Size: 52 x 53 cm

Height: 42 cm

Weight: 35 kg



URBI ET ORBI BASED IN GREECE  
(+30) 210 4520178

INFO@URBIETORBI.GR

THESSALONIKIS 61, 18233 ATHENS  
WWW.URBIETORBI.GR



# TUS CONCRETE SIDE TABLES



## ABOUT THE PRODUCT

The TUS side table series, designed by Gian Paolo Venier of OTTO Studio for the Urbi et Orbi Medius Terra collection in 2024.

TUS draws inspiration from the earth, evoking a vegetal feeling with organic forms. This project delves into nature's mathematical precision in creating seemingly organic and imprecise forms, while also being fascinated by pattern repetition. The shape is reminiscent of a cactus garden. A quote from man's intervention on nature (Le Jardin Majorelle – Marrakesh), the use of nature in architecture, is always a fascinating gesture.

This series comprises four side tables/stools, presenting one of the greatest challenges when our designer Gian Paolo presented his designs to us. We needed to capture a gradual change in color, opting to develop a unique concrete casting technique instead of using paint. Simultaneously, we emphasized the rough texture of the surface in contrast to the tabletop, which, with its polished finish, gives the impression of a segmented liquid cactus.

Ideal for both indoor and outdoor use, suitable for commercial or residential spaces.

It is produced through our company's Zero Waste Project developed over the past 3 years, with a recycling rate of 20%.



URBI ET ORBI BASED IN GREECE  
(+30) 210 4520178

INFO@URBIETORBI.GR

THESSALONIKIS 61, 18233 ATHENS  
WWW.URBIETORBI.GR

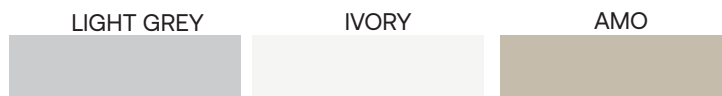
# TUS CONCRETE SIDE TABLES

## COLORS

### TOP



### BOTTOM



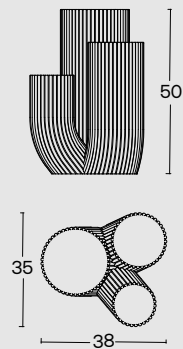
Colored in its mass with pigments



Every piece may exhibit color variations on its surface, as well as among other pieces of the same product or sample products.  
The concrete surface exhibits surface voids that are caused by the air. This is a natural property of concrete.

## SPECIFICATIONS

### INDOOR / OUTDOOR

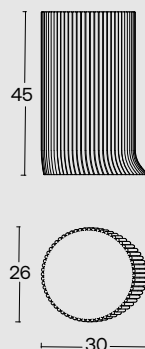


TUS TRIPLE:

Size: 35 x 38 cm

Height: 50 cm

Weight: 32 kg

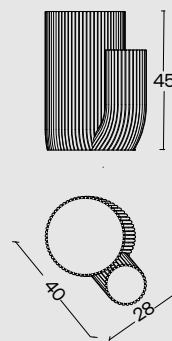


TUS SINGLE

Size: 26 x 30 cm

Height: 45 cm

Weight: 16 kg

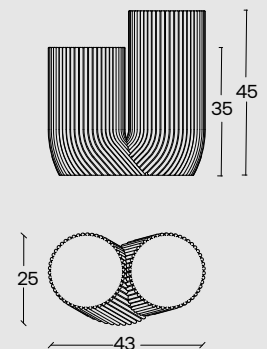


TUS DOUBLE S

Size: 28 x 40 cm

Height: 45 cm

Weight: 22 kg



TUS DOUBLE L

Size: 25 x 43 cm

Height: 45 cm

Weight: 28 kg



URBI ET ORBI BASED IN GREECE  
(+30) 210 4520178

INFO@URBIETORBI.GR

THESSALONIKIS 61, 18233 ATHENS  
WWW.URBIETORBI.GR



# MES CONCRETE COFFEE TABLE



## ABOUT THE PRODUCT

Mes concrete coffee table, Designed by Urbi et Orbi Studio in 2022, is made of cast concrete.

Mes features subtle curves along the edges of both the tabletop and the legs, seamlessly integrating with its proportions. With its material and artisanal craftsmanship, this table exudes a distinctive character.

Perfect for both residential and commercial spaces, this table can serve as a focal point, contributing to the creation of a uniquely identifiable area. Its versatility extends to both indoor and outdoor use, thanks to the durability of concrete.

This product is produced through our company's Zero Waste Project developed over the past 3 years, with a recycling rate of 20%.



URBI ET ORBI BASED IN GREECE  
(+30) 210 4520178

INFO@URBIETORBI.GR

THESSALONIKIS 61, 18233 ATHENS  
WWW.URBIETORBI.GR



# MES CONCRETE COFFEE TABLE

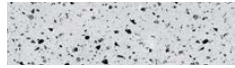
## COLORS

### SAND

ANTHRACITE



GREY

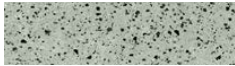


IVORY

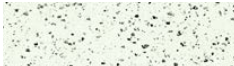


### OPTIONAL

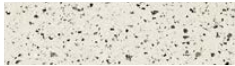
HAK



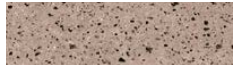
MIN



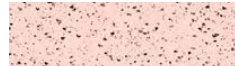
AMO



TAN



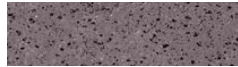
ROZ



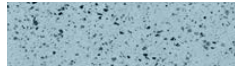
SOM



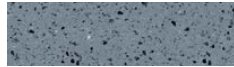
GRA



TUR



RAF

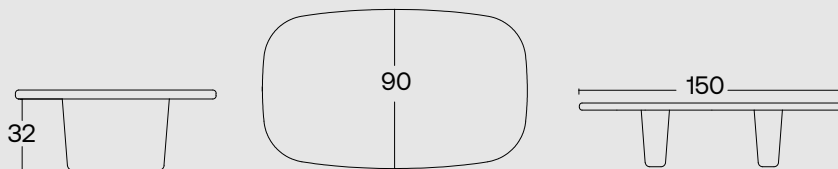


Colored in its mass with pigments

Every piece may exhibit color variations on its surface, as well as among other pieces of the same product or sample products.

The concrete surface exhibits surface voids that are caused by the air. This is a natural property of concrete.

## SPECIFICATIONS



INDOOR / OUTDOOR

Dimensions : 150 x 90 cm

Height: 36 cm

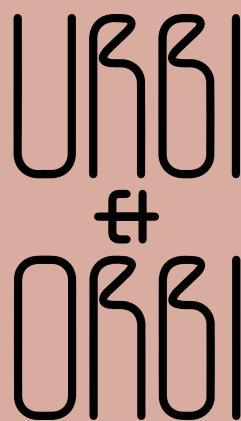
Weight: 130 kg



URBI ET ORBI BASED IN GREECE  
(+30) 210 4520178

INFO@URBIETORBI.GR

THESSALONIKIS 61, 18233 ATHENS  
WWW.URBIETORBI.GR



All rights reserved."Urbi et Orbi" brand and logos are registered trademarks. The industrial models of the product, the designation and the product photos are protected by the applicable copyright laws.

Urbi et Orbi reserves the right, in order to improve the capacities of the products, to make modifications to them, as if reference the raw materials, dimensions, weight, qualities or features, without prior notice.