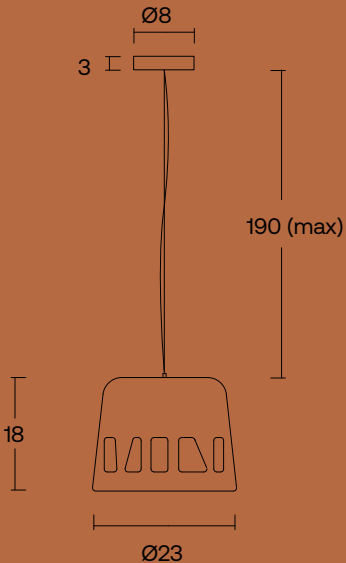


TECHNICAL SHEET
SPECIFICATIONS



LUNA
CONCRETE PENDANT LAMP

LUNA CONCRETE PENDANT LAMP



ABOUT THE PRODUCT

Luna pendant lamp was designed by Urbi et Orbi Studio in 2015.
Made of cast concrete.

The holes resembling pebbles allow light to diffuse, creating shadows and organic shapes in the space. The Luna pendant fixture imbues a pleasant mood with its character.

This concrete suspension lamp is produced through our company's Zero Waste Project developed over the past 3 years, with a recycling rate of 20%.



URBI ET ORBI BASED IN GREECE
(+30) 210 4520178

INFO@URBIETORBI.GR

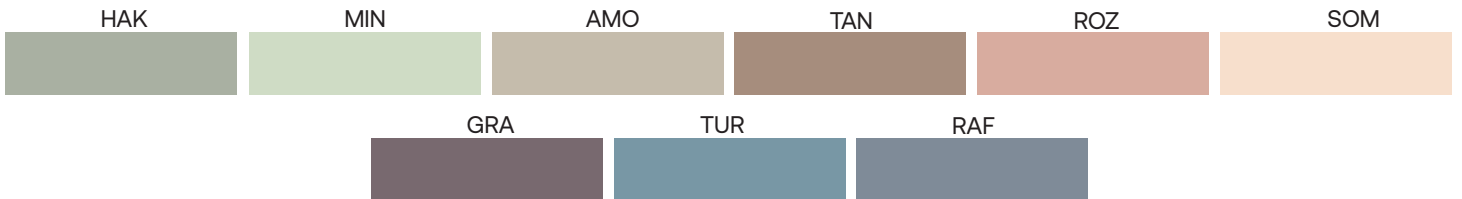
THESSALONIKIS 61, 18233 ATHENS
WWW.URBIETORBI.GR

LUNA CONCRETE PENDANT LAMP

COLORS BASIC



OPTIONAL



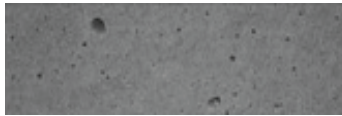
SAND



Colored in its mass with pigments

Every piece may exhibit color variations on its surface, as well as among other pieces of the same product or sample products.

The concrete surface exhibits surface voids that are caused by the air. This is a natural property of concrete.



SPECIFICATIONS

INDOOR

Diameter: 23 cm





Height: 18 cm

Edge thickness: 1 cm

Weight: 3,5 kg

Textile Cable: 1,9m max. (longer on demand)

Ceiling rose: Black Matte

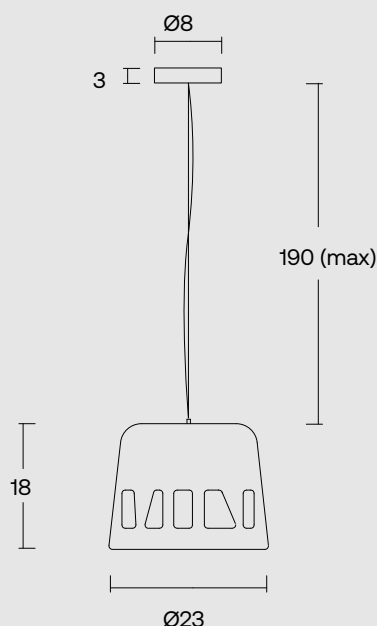
Cable Colors:    

Recommended light bulb

E27 LED max watt (W) 70

Light bulb not included

Input (V): 110-230



URBI ET ORBI BASED IN GREECE
(+30) 210 4520178

INFO@URBIETORBI.GR

THESSALONIKIS 61, 18233 ATHENS
WWW.URBIETORBI.GR



All rights reserved. "Urbi et Orbi" brand and logos are registered trademarks. The industrial models of the product, the designation and the product photos are protected by the applicable copyright laws.

Urbi et Orbi reserves the right, in order to improve the capacities of the products, to make modifications to them, as if reference the raw materials, dimensions, weight, qualities or features, without prior notice.