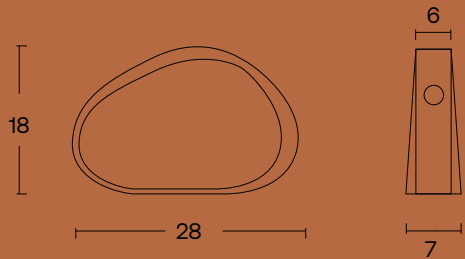


TECHNICAL SHEET
SPECIFICATIONS



ARETHA T
CONCRETE TABLE LAMP

ARETHA T CONCRETE TABLE LAMP



ABOUT THE PRODUCT

Aretha T table lamp is designed by Urbi et Orbi Studio in 2016, part of the FUNKY collection.

Aretha is a feminine name of Greek origin. It derives from the word “arete,” meaning “virtue” or “excellence.” A name associated with the '70s era as a cultural icon whose influence surpassed music.

The Aretha T lamp was created in the workshop by combining 2 concentric circles. The random mechanical distortion formed this organic shape that reflects the diversity of the '70s.

It is a table lamp that adds unique value to a space on its own. The Aretha series is complemented by a wall lamp and a suspension lamp.

This concrete table lamp is produced through our company's Zero Waste Project developed over the past 3 years, with a recycling rate of 20%.



URBI ET ORBI BASED IN GREECE
(+30) 210 4520178

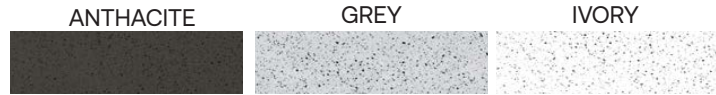
INFO@URBIETORBI.GR

THESSALONIKIS 61, 18233 ATHENS
WWW.URBIETORBI.GR

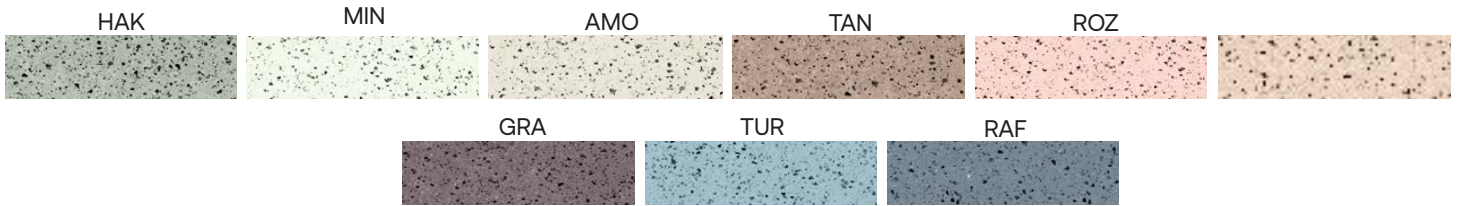
ARETHA T CONCRETE TABLE LAMP

COLORS

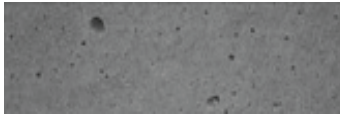
SAND



OPTIONAL

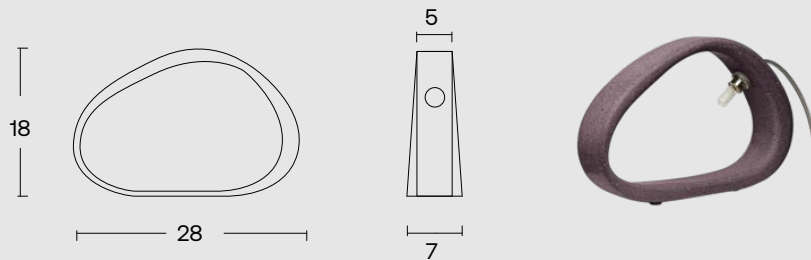


Colored in its mass with pigments



Every piece may exhibit color variations on its surface, as well as among other pieces of the same product or sample products.
The concrete surface exhibits surface voids that are caused by the air. This is a natural property of concrete.

SPECIFICATIONS



INDOOR

Size: 28 cm x 5-7 cm

Height: 18 cm

Weight: 1.3kg

Type of socket G9

Recommended light bulb: LED max 10W

Light bulb not included

Input (V):110-230 | Type C plug (EU)



URBI ET ORBI BASED IN GREECE
(+30) 210 4520178

INFO@URBIETORBI.GR

THESSALONIKIS 61, 18233 ATHENS
WWW.URBIETORBI.GR



All rights reserved."Urbi et Orbi" brand and logos are registered trademarks. The industrial models of the product, the designation and the product photos are protected by the applicable copyright laws.
Urbi et Orbi reserves the right, in order to improve the capacities of the products, to make modifications to them, as if reference the raw materials, dimensions, weight, qualities or features, without prior notice.